
STM

Catalogue 2012



Seminari Theoloji Malaysia (41059-P)

马来西亚神学院

Taman South East
70100 Seremban
Negeri Sembilan
Malaysia

Tel: 606-632 2815

Fax: 606-632 9766

Email: admin@stm.edu.my

Webpage: www.stm.edu.my

<http://www.e-stm.blogspot.com>

facebook

Content Page:

STM Mission Statement	2
From the Principal's Desk	3
STM Council (2010–2012)	4
Faculty & Staff	5-10
A Brief History of STM	11
Doctrinal Statement	12
Location, Conference and Retreat Facilities	13-14
Application & Admission	15-20
In-Campus Programmes	21-26
• Foundation Studies	
• Diploma of Theology	
• Bachelor of Divinity	
• Graduate Diploma in Christian Studies	
• Master of Christian Studies	
• Master of Divinity	
Field Education	27
Theological Education by Extension (TEE) Programmes	28-31
Advanced Ministerial Studies Programmes	32-34
• Master of Ministry	
• Doctor of Ministry	
Postgraduate Studies Programmes	35-41
• Master of Theology	
• Doctor of Theology (ATU)	
Fees	42-44
STM Community & Spiritual Formation	45
Library & Resources	46
Relationships with the Wider Church	47-48
To STM Friends & Partners	49
STM Friends & Partners' Reply Slip	50
Appendix:	
• Faculty Publication	51-52
• STM Alumni Association	53
• Guidelines on HIV/AIDS	54

STM Mission Statement

Vision

God's people equipped for ministry and mission.

Mission

To facilitate full time workers and lay people to grow in Christian maturity and to train them for ministry and service in and through the Church.

Objectives

- To train pastors and Christian workers to meet the growing needs of the Church.
- To enable lay people to be more effective in their Christian witness and ministry.
- To provide training which integrates spiritual formation, academic excellence and development of ministerial skills.
- To provide theological education in a contextually relevant and sensitive manner.
- To develop a centre for research on issues facing the Malaysian Church.



From the Principal's Desk

Seminari Theoloji Malaysia (STM; Malaysia Theological Seminary) was founded on 6 January 1979 to meet the need to train pastors and church workers contextually and wholistically. This would not be possible if it were not for our Founding Members, namely, The Anglican Diocese of West Malaysia, The Evangelical Lutheran Church of Malaysia, and The Methodist Church in Malaysia. Subsequently, The Anglican Diocese of Sabah (1997), The Presbyterian Church in Malaysia (GPM; 2004) and The Lutheran Church in Malaysia and Singapore (2005) joined us as sponsoring Member Churches.

The primary objective of STM is to train mission-minded and progressive pastors and church workers to meet the growing needs of the churches and the demanding challenges in the world. Our academic programmes have strong a emphasis on Biblical studies, theological studies, pastoral studies, spiritual formation, and social-religious studies.

STM offers a range of study programmes from basic theological training to advanced theological research. The Bachelor of Theology (BTh), Bachelor of Divinity (BD) and Master of Divinity (MDiv) programmes have been accredited by The Association for Theological Education in South East Asia (ATESEA) since 1984. In order to cater for lay leadership training, we conduct Theological Education by Extension (TEE) programmes in English, Tamil and Chinese languages in Seremban, the Klang Valley and Kuching.

In order to meet the increasing demand for pastoral development, renewal and enrichment, we offer advanced ministerial studies and postgraduate studies for pastors and lecturers. The Master of Ministry (MMin) and Doctor of Ministry (DMin) programmes are advanced ministerial training offered in response to the fast changing contexts aimed at equipping pastoral leaders for greater tasks and theological reflection. For many years, STM is also an active participating school of The South East Asia Graduate School of Theology (SEAGST) in offering Master of Theology (MTheol) and Doctor of Theology (DTheol) studies, which are academic research programmes. With effect from 2010, STM began offering our own Master of Theology (MTh) programme. In that same year, STM was invited by ATESEA Theological Union (ATU), formerly known as SEAGST, to serve as one of the Centers for Theological Excellence to offer the Doctor of Theology programme.

Our goal is to equip men and women of God, who are able to think critically, discern with spiritual insight, commit strongly to the Church and ministry, and serve God with "hearts on fire". Since the inception of STM, we have been blessed with more than 700 graduates who are now involved in active ministries in different parts of the world. Our full-time students, both local and international, come from diverse backgrounds, cultures and denominations.

We are grateful and thankful to God for the Member Churches and sponsoring Churches, "STM Friends and Partners" and generous donors for the years of support and contributions, which are crucial in accomplishing the immense task that the Lord has entrusted us. Please consider becoming a "STM Friend or Partner" and also send us your best people for training.

This *Catalogue* aims as a guide to the community and ministry of STM that we hope you find it helpful. Should you need further information, please feel free to visit our website (www.stm.edu.my), write to us or call us.

In His Service,
Rev Dr Ezra KOK Hon-Seng
The Principal



STM Council (2010–2012)

President: The Rt Rev Dr Solomon Rajah (*The Evangelical Lutheran Church of Malaysia*)

Vice President: Bishop Dr Hwa Yung (*The Methodist Church in Malaysia*)

Honorary Secretary: Mr Tan Kee Huat (*Company Secretary*)

Honorary Treasurer: Dr Deva Dassan Solomon (*The Anglican Diocese of West Malaysia*)

Members:

The Rt Rev Datuk Ng Moon Hing (*The Anglican Diocese of West Malaysia*)

The Rt Rev Datuk Albert Vun Cheong Fui (*The Anglican Diocese of Sabah*)

The Rt Rev Jason Selvaraj (*The Anglican Diocese of West Malaysia*)

Mr Edward Cheah Bian Siew (*The Anglican Diocese of West Malaysia*)

Mr James Chee Boon Soo (*The Anglican Diocese of West Malaysia*)

Ir Marcus Sundram (*The Anglican Diocese of West Malaysia*)

Rev Caleb Santhosham (*The Evangelical Lutheran Church of Malaysia*) [*until December 2011*]

Mr Samson Paul (*The Evangelical Lutheran Church of Malaysia*) [*until December 2011*]

Rev Samuel Anbunathan (*The Evangelical Lutheran Church of Malaysia*) [*starting January 2012*]

Dr Louis Nethaniel Johnson (*The Evangelical Lutheran Church of Malaysia*) [*starting January 2012*]

Rev Boh Che Suan (*The Methodist Church in Malaysia, Chinese Annual Conference*)

Mr Richard Wong King Iion (*The Methodist Church in Malaysia, Chinese Annual Conference*)

Rev C. Jayaraj (*The Methodist Church in Malaysia, Tamil Annual Conference*)

Mr Anthony Row (*The Methodist Church in Malaysia, Tamil Annual Conference*)

Rev Dr Ong Hwai Teik (*The Methodist Church in Malaysia, Trinity Annual Conference*)

Dato' Dr Alex Mathews (*The Methodist Church in Malaysia, Trinity Annual Conference*)

Rt Rev Chua Hua Peng (*The Presbyterian Church in Malaysia; GPM*)

Rev Ng Kai Foo (*The Presbyterian Church in Malaysia; GPM*)

The Rt Rev Dr Philip Lok Oi Peng (*The Lutheran Church in Malaysia & Singapore*)

Rev Thomas Low (*The Lutheran Church in Malaysia & Singapore*)

Principal: Rev Dr Ezra Kok Hon-Seng




Faculty & Staff

STM is committed to providing the best possible training and theological education in this multi-cultural and multi-religious society. We seek to provide theological education in a contextually relevant and sensitive manner. All full-time faculty members are encouraged to continue in research and to pursue further studies. New lecturers recruited will be sent for advance degree programmes. For the benefit of the students, adjunct faculty members and experienced pastors are also invited to supplement the teaching, training, education and resources of the seminary.

Full-time Faculty

	<p>Rev Dr Ezra KOK Hon Seng (<i>Principal</i>) Chinese Department Faculty <i>Qualifications:</i> BTh (Alliance Bible Seminary, Hong Kong, 1979); MDiv (China Graduate School of Theology, Hong Kong, 1984); PhD (University of Durham, 1993). <i>Denomination:</i> Methodist, Chinese Annual Conference. <i>Area of Studies:</i> New Testament.</p>
	<p>Rev Dr Anthony LOKE Yin Fai (<i>Director of Communications and Developments; Publications</i>) English Department Faculty <i>Qualifications:</i> BD (STM/SEAGST, 1984); MTheol (SEAGST, 1996); PhD (OCMS, University of Wales, 2011). <i>Denomination:</i> Methodist, Trinity Annual Conference. <i>Areas of Studies:</i> Old Testament.</p>
	<p>Rev Dr TAN Jin Huat (<i>Dean of Studies 2011-2014; Director of CTEE</i>) English Department Faculty <i>Qualifications:</i> BSc Hons (University of Malaya, 1974); DipHE (Trinity, Bristol, 1981); BA Hons (LBC, 1982); MTh (University of Aberdeen, 1989); PhD (OCMS, University of Wales, 2008). <i>Denomination:</i> Anglican, Diocese of West Malaysia. <i>Areas of Studies:</i> Church History and New Testament.</p>
	<p>Rev Dr WONG Tik Wah (<i>Dean of Students 2010-2013; Assistant Director of Field Education</i>) Chinese Department Faculty <i>Qualifications:</i> BTh (STM/SEAGST, 1993); MTh (Trinity Theological College, 1999), PhD (MCD University of Divinity, Melbourne, 2008). <i>Denomination:</i> Methodist, Chinese Annual Conference. <i>Area of Studies:</i> Christian Theology.</p>
	<p>Rev Dr LIM Kar Yong (<i>Director of Postgraduate Studies</i>) English Department Faculty <i>Qualifications:</i> B. Surveying (Property Management) Hons (UTM, 1991); BA in Bible/Theology (ICI University, 1997); MA in New Testament (Summa cum Laude) (Gordon-Conwell, 2000); PhD (University of Wales, 2007). <i>Denomination:</i> Evangelical Free Church. <i>Areas of Studies:</i> New Testament.</p>


	<p>Rev Dr Philip SIEW Tye Yau (<i>Director of Advanced Ministerial Studies</i>) Chinese Department Faculty <i>Qualifications:</i> BTh (Trinity Theological College, 1983); MTheol (SEAGST, 1991); MTh (Fuller, 1993); PhD (Fuller, 1999). <i>Denomination:</i> Methodist, Chinese Annual Conference. <i>Areas of Studies:</i> Missiology and Old Testament.</p>
	<p>Ms HO Gaik Kim (<i>Chapel Warden</i>) English Department Faculty <i>Qualifications:</i> BA Hons (University of Malaya, 1981); MTS (Regent College, 1989). <i>Denomination:</i> Methodist, Trinity Annual Conference. <i>Areas of Studies:</i> Biblical Studies, Church History and Bahasa Malaysia.</p>
	<p>Rev TEE Heng Peng (<i>Field Education Director</i>) Chinese Department Faculty <i>Qualifications:</i> B. Applied Sc (Hon) (Universiti Sains Malaysia, 1981); MDiv (Trinity Theological College, 1994); MTheol (STM/SEAGST, 2003); DTheol Candidate (SEAGST). <i>Denomination:</i> Presbyterian, Gereja Presbyterian Malaysia. <i>Areas of Studies:</i> Church History and New Testament.</p>
	<p>Rev Dr Joseph KOMAR (<i>Tamil TEE Director; Director of Institute of World Religions</i>) English Department Faculty <i>Qualifications:</i> GradDip in Theology (Union Biblical Seminary, India, 1982); ThM (Presbyterian College and Theological Seminary, Korea, 1999); PhD (SAIACS, India, 2008). <i>Denomination:</i> Methodist, Tamil Annual Conference. <i>Area of Studies:</i> Pastoral Studies and Missiology.</p>
	<p>Pastor Elaine GOH Wei Fun (<i>Chinese TEE Director</i>) Chinese Department Faculty <i>Qualifications:</i> B Mass Communication (Hons) (Universiti Sains Malaysia, 1995); MDiv (STM/SEAGST, 2000); MTh (Princeton, 2007); DTheol Candidate (SEAGST). <i>Denomination:</i> Methodist, Chinese Annual Conference. <i>Areas of Studies:</i> Old Testament.</p>
	<p>Canon Dss Margaret CHEN Siew Ying (<i>Assistant Field Education Director</i>) Chinese Department Faculty <i>Qualifications:</i> BTh (STM/SEAGST, 1984); MRE (Lutheran Theological Seminary, Hong Kong, 1992); DipHE (Birmingham, 2000); STM (Lutheran Theological Seminary, 2003); DMin Candidate (Lutheran Theological Seminary). <i>Denomination:</i> Anglican, Diocese of West Malaysia. <i>Areas of Studies:</i> Christian Education and Pastoral Studies.</p>

	<p>Pastor LAW Choon Sii (<i>Female Dorm Warden; Book Service Director – from June 2012</i>) Chinese Department Faculty <i>Qualifications:</i> B. Biomedical Science (Hons) (University of Malaya, 1999); MDiv (Trinity Theological College, 2006); MTheol (STM/SEAGST, 2008); DTheol Candidate (ATU). <i>Denomination:</i> Methodist <i>Areas of Studies:</i> New Testament</p>
	<p>Rev CHEW Kean Kee (<i>MATS Secretariat; Student Counsellor</i>) Chinese Department Faculty <i>Qualifications:</i> BAg Sc (University of Malaya, 1972); MDiv (STM/SEAGST, 1996); MTh (Princeton, 2000); MA in Care and Counselling (China Lutheran Seminary, Taiwan, 2011). <i>Denomination:</i> Lutheran, Lutheran Church in Malaysia and Singapore. <i>Areas of Studies:</i> World Religions and Counselling.</p>
	<p>Rev Dr ONG Meng Chai (<i>Head of Library; Student Counsellor</i>) English Department Faculty <i>Qualifications:</i> Technician Diploma in Mechanical Engineering (Singapore Polytechnic, 1975); Ministerial Training (London Theological Seminary, 1986); PhD (King's College, University of London, 2003). <i>Denomination:</i> Evangelical Free Church <i>Areas of Studies:</i> Christian Theology and Pastoral Theology.</p>


Visiting Scholars

	<p>Rev Dr Paul A. BARKER English Department Faculty <i>Qualifications:</i> BA (Actuarial Studies) (Macquarie University, Sdney, 1981); BTh (Ridley College of Melbourne, 1990); PhD (University of Bristol, 1996). <i>Denomination:</i> Anglican <i>Area of Studies:</i> Old Testament and Preaching</p>
	<p>Dr Peter LAU (<i>Assistant Head of Library</i>) English Department Faculty <i>Qualifications:</i> MB BS BSc (Med) (University of New South Wales, 1995); FRACGP (Royal Australian College of General Practitioners, 2000); Dip D&M (Sydney Missionary & Bible College, 2002); MDiv (Sydney Missionary & Bible College, 2003); PhD (University of Sydney, 2008). <i>Denomination:</i> Independent <i>Area of Studies:</i> Old Testament</p>
	<p>Mr Allen Brian MCCLYMONT (<i>Assistant Field Education Director; Book Service Director – till June 2012</i>) English Department Faculty <i>Qualifications:</i> BD (Bible College of New Zealand, 1993); MA in Systematic Theology (King's College, University of London, 2001). <i>Denomination:</i> Anglican <i>Area of Studies:</i> New Testament and Theology.</p>

Student Counsellor

	<p>Dr VOON Choon Khing <i>Qualifications:</i> SRN (UK, 1973); SCM (UK, 1975); DipTh (London, 1978); MA in Library Science (University of London, 1992); ThM (University of Duke, 1996); DMin (Graduate Theological Foundation, 1999). <i>Denomination:</i> Methodist, Trinity Annual Conference. <i>Areas of Studies:</i> Pastoral Studies and Christian Spirituality.</p>
---	--

English TEE Director

	<p>Pastor WONG Moi Lee <i>Qualifications:</i> BD (STM/SEAGST, 2001); MA in Ministry (Bible College of Victoria, 2003); DMin Candidate (STM). <i>Denomination:</i> Independent. <i>Areas of Studies:</i> Pastoral Studies and Christian Counselling.</p>
---	---

Guest Lecturers (Adjunct Faculty)

Rev Dr CHEW Tow Yow
English Department Faculty
Qualifications: PhD (Universiti Malaya); MTh (Emory).
Denomination: Methodist, Trinity Annual Conference.
Area of Studies: Pastoral Theology and New Testament.

Rev Wolfgang GRIENINGER
English Department Faculty
Qualification: MTh (Tübingen).
Denomination: Lutheran, Evangelical Lutheran Church of Bavaria.
Area of Studies: Lutheranism, Worship and Liturgy.

Rev Dr HO Hon Yan
Chinese Department Faculty
Qualifications: DMin (Southern Methodist University).
Denomination: Methodist, Chinese Annual Conference.
Area of Studies: Pastoral Studies.

Mrs Esther HO-Lee Ying Shyuan
Chinese Department Faculty
Qualification: MTS (Southern Methodist University).
Denomination: Methodist, Chinese Annual Conference.
Area of Studies: Christian Education.

Mrs Loke-LAU King Lang
English Department Faculty
Qualifications: MTheol (STM/SEAGST, 2005).
Denomination: Methodist, Trinity Annual Conference.
Area of Studies: Christian Education, Children Ministry.

Rev SIEW Woh
English Department Faculty
Qualification: MDiv & MA(OT) (Columbia Bible Seminary); DMin Candidate (SBC).
Denomination: Baptist.
Area of Studies: Pastoral Theology, Old Testament and Old Testament Theology.

Rev Dr Albert Sundararaj WALTERS
English Department Faculty
Qualification: PhD (Birmingham).
Denomination: Anglican, Diocese of West Malaysia.
Area of Studies: World Religions.

Rev Dr Andrew TAN
English Department Faculty
Qualification: DMin (Asbury)
Denomination: Methodist, Trinity Annual Conference.
Area of Studies: Pastoral Ministry, Methodism.

Dr Herbert TAN Chee Seng
English Department Faculty
Qualification: PhD (Northwestern University).
Denomination: Methodist, Trinity Annual Conference.
Area of Studies: Christian Education.

Staff

Mrs Vernie Wong-WOO <i>Admin & Finance Manager</i>	[vacant] <i>Principal's Secretary</i>
Ms Caryn LEE Lee Yin <i>Office Administrator</i>	Mr CHAN Hon Yee <i>IT Officer</i>
Mr KIEW Law King <i>Administrative Assistant</i>	Ms Christabel WONG Lee May <i>Senior Assistant Librarian</i>
Ms Margaret TANG <i>Accounts Officer</i>	Mr P. SAKTHIVEL <i>Library Assistant</i>
Ms Viganeswary A/P Rasamaningam (Vicky) <i>Office Clerk Assistant</i>	Ms LING Hua Hiong <i>Assistant Librarian</i>
Ms Denise TAN <i>Communications Officer (English)</i>	[vacant] <i>Communications Officer (Chinese)</i>
Ms CHEAH Lee Mee <i>Academic Secretary</i>	Mrs Ruth TEE <i>Academic Officer</i>
Ms Laurie TOONG <i>Administrator for CTEE (PJ)</i>	Ms Mahimai Doss Josephine <i>Academic Office General Clerk (TTEE)</i>
Mr LEE Kai Chee <i>Maintenance Officer</i>	Mr CHIEW Sung Ann <i>Cook</i>
Mr Peadas a/l W.P. Fernando <i>Gardener</i>	Ms Ramayee A/P Manivaloo <i>Assistant Cook</i>
Mr Selvanayagam a/l Sinniah <i>Gardener</i>	Ms Indra a/p Maniam <i>Assistant Cook</i>
Ms Selvi d/o M. Ramasamy <i>Cleaner</i>	Ms Manel d/o Fernando <i>Cleaner</i>

A Brief History of STM

STM was established as a joint Anglican, Evangelical Lutheran and Methodist venture on 6 January 1979. This venture was later expanded to include The Anglican Diocese of Sabah in 1997, The Presbyterian Church in Malaysia and The Lutheran Church in Malaysia and Singapore in 2004 and 2005.

The journey of STM began at the ELCM premises at *Brickfields* (1979-April 1983). Since then, we have moved to the Methodist High School premise in *Sentul* (June 1983-1991) and from Sentul to St Xavier Hall in Jalan Gasing, Petaling Jaya (1992-1997). For nearly twenty years, STM was nomadic. Finally, in 1998 we shifted to our permanent campus in Seremban in time for the new academic year.

We are glad to see more churches are taking steps to prepare suitable and qualified ministers for the task of teaching in the seminary. The vision of our founding fathers, the late Bishop Emeritus C.N. Fang, the late Bishop E.B. Muthusami and the late Bishop Tan Sri J.G. Savarimuthu, together with the first and second principal, Bishop Emeritus Datuk Dr Denis C. Dutton and Bishop Dr Hwa Yung, have left an indelible impact on STM.

Our total graduands are now above 700 and are serving in different parts of Malaysia and beyond. Our faculty members have faithfully been upgrading and deepening their experiences to serve well. Since October 1984, the seminary has been accredited by The Association for Theological Education in South East Asia (ATESEA) to grant the Bachelor of Theology, the Bachelor of Divinity, and the Master of Divinity degrees. The **accreditation** of the seminary by ATESEA (<http://www.atesea.net>) was an important milestone. With this recognition, the degrees granted by STM are internationally accepted and recognised.

In November 1994, STM was accepted as a participating school of The South East Asia Graduate School of Theology (SEAGST), which conducts programmes of advanced theological studies and grants the degrees of Master of Theology and Doctor of Theology. STM has been an active partner in the consortium, and even became the Area Dean Office in December 2005, until SEAGST was re-structured as ATESEA Theological Union (ATU) in September 2009. STM was then invited to be one of the twelve "Centres for Theological Excellence" in providing Doctor of Theology studies in 2010.

On the whole, our development has been steady. We are committed to give our best; the curriculum is reviewed frequently, lectures and assignments are brought into a balance, quality of field education experience and community life is improved continually, and our library resources are expanded regularly. We also consolidated our administrative procedures and enlisted the basic facilities required by the seminary community.



Bishop Emeritus Datuk Dr
Denis C. Dutton
Principal from 1979 – 1985



Bishop Dr Hwa Yung
Principal from 1986- June 2001



Rev Dr Ezra Kok
Principal since July 2001

Doctrinal Statement

The seminary, in her life and teaching, seeks to be faithful to the central truths of the Christian Faith as contained in the Holy Scriptures of the Old and New Testaments and summarised in such historic confessions of the Christian Church as the Apostles' Creed and the Nicene Creed, and the doctrinal standards of the Anglican, Evangelical Lutheran and Methodist Churches. These truths include:

- There is one God. He eternally exists as Father, Son and Holy Spirit and is the Creator, Redeemer and Sustainer of all things. He is perfect in love.
- God has revealed Himself to us through His Son, our Lord Jesus Christ, the Living Word. He has also made Himself known through the divinely inspired Scriptures of the Old and New Testaments, the Written Word, which is our supreme authority in all matters of faith and conduct.
- We were made for fellowship with God, but by disobeying Him we have become sinners and guilty in His sight, alienated from God, ourselves, our fellow human beings and from nature.
- Jesus Christ, the Incarnate Son of God, born of the Virgin Mary, lived a sinless and self-giving life and died on the Cross for us as the perfect sacrifice for sin. By this He revealed the love of God, removed our guilt, set us free from sin and death and their powers, and reconciled us to God.
- We are justified by the grace of God through faith in Christ who was crucified and raised by God from the dead.
- The Holy Spirit leads us to repent of our sins and to trust in Christ. He lives in us, enables us to grow in the knowledge and love of God and empowers us for mission. To these ends he generously provides the necessary gifts to all believers.
- The Church, the Body of Christ, is of divine origin. Out of every race and nation, the people of God are called to respond to Him, to offer acceptable worship to Him, to follow Christ and to serve Him by proclaiming the Gospel to all nations. The Church is nurtured through the ministry of the Word and Sacrament, and through pastoral care. In the context of a pluralistic society, Christians are also called to strive for social justice and the relief of human distress in co-operation with people of goodwill. Within the total ministry of the whole people of God, lay and ordained have their distinct yet complementary roles.
- Jesus Christ, the Lord of the Church has called us to live in love. Christians should strive for unity that is not merely spiritual, but also visible, so that the world might believe.
- Jesus Christ will return one day as Lord and Judge and fully manifest His kingly rule over all creation.

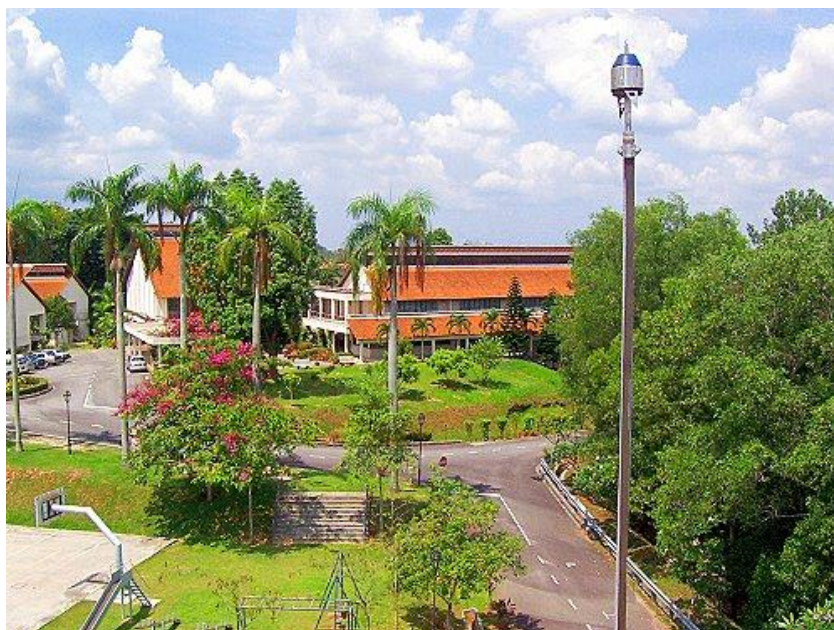


Location, Conference and Retreat Facilities

STM is located on the edge of **Seremban**, 64km south of Kuala Lumpur, the capital city of Malaysia. Being the state capital of Negeri Sembilan, Seremban is a booming city with all the associated infrastructure of a modern city. It is easily assessable by the North-South highway (PLUS). Both the Kuala Lumpur International Airport (KLIA) and the Low Cost Carrier Terminal (LCCT) are not too far away either. Churches and individuals can use the place for conferences, retreats, church camps, quiet prayer or study of God's Word.

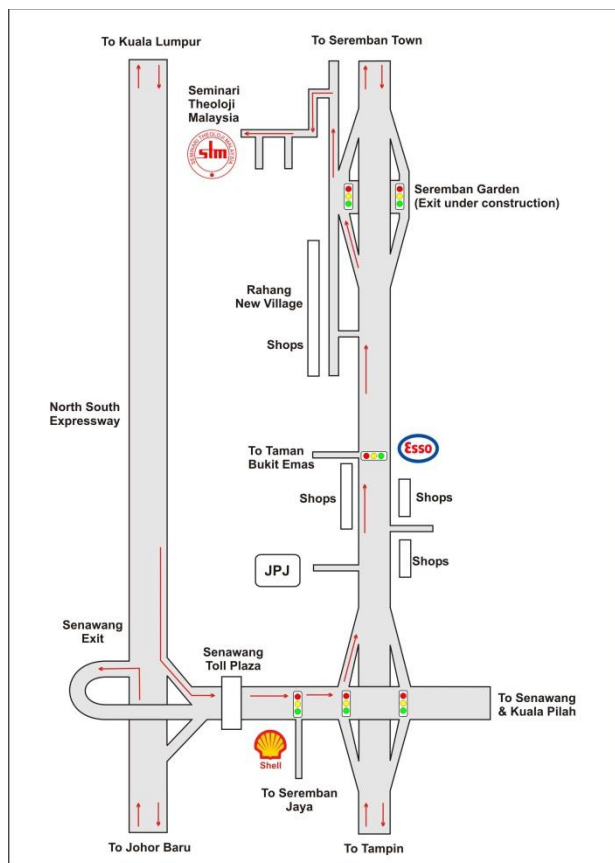


This Seremban campus provided by God is a beautiful and quiet campus in a tranquil environment. The spacious 5.6 acre campus is atop a hill. The place is ideal for academic study and spiritual formation.

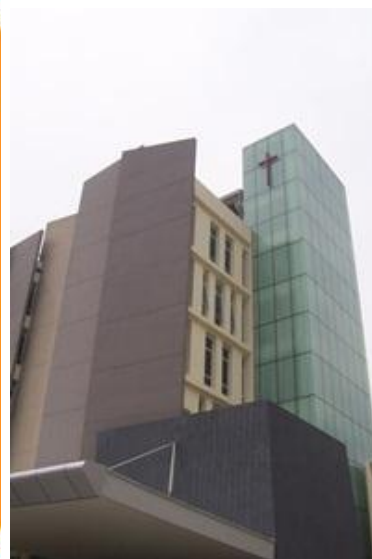
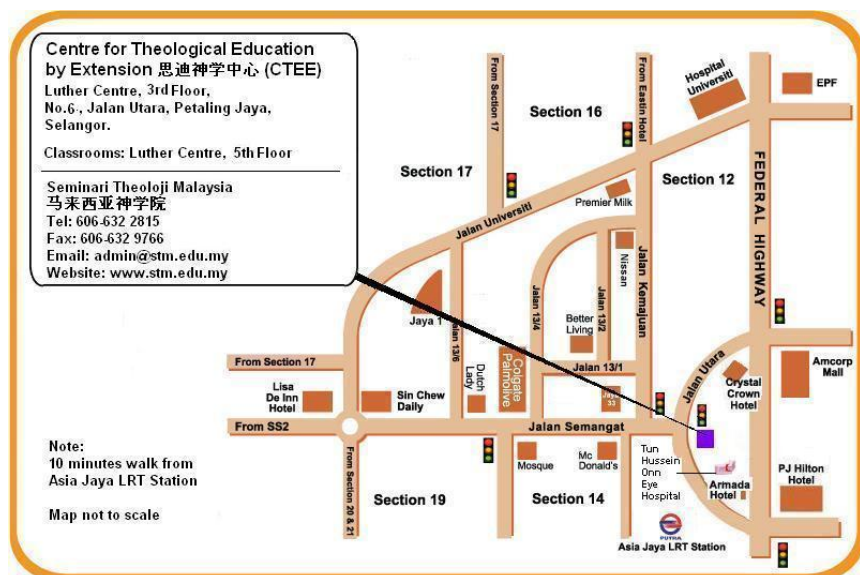


We are well equipped. Some of our facilities include the library, multi-purpose hall, lecture rooms, chapel, prayer room, music room, kitchen and dining hall, pantry and lounge area, guest rooms, hostel rooms and campus wide internet access. For further details on booking, please contact the Office Administrator, Miss Caryn Lee.

Location Map of Seremban Campus



In order to cater to the needs of working professionals and expanding our TEE programmes in the Klang Valley, we have a rented office “Center for TEE” (**CTEE**) at Luther Centre, No. 6 Jalan Utara, 46200 Petaling Jaya, Selangor. There is a small library collection for basic theological studies. Besides offering the usual English and Chinese TEE courses, we intend to provide a part-time MDiv programme in the near future. This MDiv programme is specifically designed for busy working professionals in preparing them for church leadership and pastoral ministry. The part-time MDiv programme will appeal to those who desire theological training for future ministry but are unable to study full-time due to personal and family commitments.



Application & Admission

1. General Admission Requirements

- 1.1 Students must be Christians in good standing with their churches, have a genuine desire for Christian service, and have attained the age of 20 in the first year of their course.
- 1.2 Two years' working experience is normally required except for those who possess a properly accredited university degree or equivalent qualification.
- 1.3 Proficiency in English/Chinese is necessary for the courses applied to in the respective language department. Those applying for English department are required to sit English language examination. It is advantageous for Chinese and Tamil streams students to read and converse in English. Proficiency in Tamil language is applicable to Tamil TEE course.
- 1.4 A recommendation from the pastor of the church is required.
- 1.5 Single students are normally required to be residential.
- 1.6 All students are to comply with the seminary rules.

2. Admission Procedure

- 2.1 All prospective students are required to send their application through their church. The application must be received by STM before **1st October** for Malaysian applicants. Self-financing or independent students may apply directly to the seminary.
- 2.2 Application forms may be obtained from the Academic Office or the Seminary website (www.stm.edu.my). Basic informations concerning your age, church, occupation, work experience, academic qualifications and proposed programme of study should be included.
- 2.3 You must send in all the application documents to:
The Academic Office
Seminari Theoloji Malaysia
Taman South East, 70100 Seremban
Negeri Sembilan, Malaysia.
- 2.4 The Application Fee is non-refundable.
- 2.5 An endorsement letter from one's respective church denomination authority is required if he or she is sponsored by the denomination. In such case, the person must fulfil the requirements of his or her sending denomination.
- 2.6 Interviews with prospective students are normally held on first week of November or before to enable the faculty members to meet the candidates and to ensure that entrance requirements have been fully met.
- 2.7 Once an offer for admission is made to the applicant, he or she must officially reply to the Academic Office his or her acceptance or otherwise. The person must agree to abide by the rules and regulations of the seminary.
- 2.8 An orientation programme for all new students is held in the week before the first semester of the academic year.

3. General Programme Descriptions

- 3.1 Basic Study Programmes
 - a. Diploma of Theology (DipTh)
This is a two-year programme of 60 credit hours, for those with HSC/STPM/A' Level (minimum, 2 Principal Passes plus 2 Subsidiary Passes) or its equivalent.

For those with MCE/SPM/O' Level or its equivalent (Aggregate of 30 and less in best five subjects and a Pass in English is required), they are required to complete a Foundation Year. In order for them to continue into DipTh proper, they must attain a cumulative Grade of C+ (i.e. a CGPA of 3.0).

b. Bachelor of Divinity (BD)

This is a four-year programme of 120 credit hours for those with HSC/STPM/A' Level (minimum, 2 Principal Passes plus 2 Subsidiary Passes) or its equivalent.

For those with MCE/SPM/O' Level or its equivalent (Aggregate of 30 and less in best five subjects and a Credit in English is required), they are required to complete a Foundation Year. In order for them to continue into the BD proper, they must attain a cumulative Grade of C+ (i.e. a CGPA of 3.0).

c. Graduate Diploma of Christian Studies (GradDipCS)

This is a one-year graduate study programme of 30 credit hours for graduates of recognised universities, or those with equivalent qualifications.

d. Master of Christian Studies (MCS)

This is a two-year graduate study programme of 60 credit hours for graduates of recognised universities, or those with equivalent qualifications.

e. Master of Divinity (MDiv)

This is a three-year graduate study programme of 90 credit hours for graduates of recognised universities, or those with equivalent qualifications.

3.2 Advanced Ministerial Studies Programme

a. Master of Ministry (MMin)

This is a one-year postgraduate programme of 30 credit hours offered to pastors and church workers who possess a first degree in theological studies and have two years of ministerial experience. It is one-year for fulltime studies, five years for part-time studies.

b. Doctor of Ministry (DMin)

This is a 2 to 6 years postgraduate programme of 32 to 56 credit hours depending on the entrance level of the applicant. The programme is open to Master of Theology, Master of Ministry and Master of Divinity degree holders.

3.3 Postgraduate Studies Programme

a. Master of Theology (MTh)

The MTh degree is an advanced postgraduate research programme specially designed to provide specialised training in advanced theological research and teaching. It is open to those who have a strong first theological degree. The MTh can be taken either on a full-time or part-time basis.

b. Doctor of Theology (DTheol) [ATU]

This is the highest postgraduate, academic and research programme offered under The ATESEA Theological Union (ATU, formerly known as SEAGST) for those who possess a degree in Master of Theology or equivalent. Research students can enrol on a full-time or part-time basis.

- With effect from 2010, STM serves as one of the ATU Centers for Theological Excellence to offer the DTheol programme.

4. Mature Student Category

This refers to students without the necessary entrance qualification for the DipTh/BD who are 26 years old and above with basic MCE/SPM/O' Level qualifications at the time of application to study at STM. Under this category, they can take DipTh or BD with the addition of a Foundation Year of study or its equivalent.

5. Upgrading to a Higher Programme (*Only In-Campus Programme*)
 To qualify for upgrading, candidates must maintain a satisfactory level of performance in their academic programme and should possess a GPA of 3.0 and above. If the requirements are met, the following upgrading will be allowed:
- 5.1 DipTh graduates may be allowed to enrol for another 60 credit hours of the BD programme to graduate with the degree. This is approximately two years of in-campus full-time study.
 - 5.2 GradDipCS graduates may be allowed to enrol for another 30 credit hours of the MCS programme to graduate with the degree. This is approximately one year of in-campus full-time study.
 - 5.3 GradDipCS graduates may be allowed to enrol for another 60 credit hours of the MDiv programme to graduate with the degree. This is approximately two years of in-campus full-time study.
 - 5.4 MCS graduates may be allowed to enrol for another 30 credit hours of the MDiv programme to graduate with the degree. This is approximately one year of in-campus full-time study.
 - 5.5 For other categories of graduates not mentioned above, please contact the Dean of Studies.
6. Transfer Students from other Seminaries
 Students who have done some academic work at another accredited seminary may apply to transfer certain credit hours to his or her programme in STM. Students granted such transfer credits may still be required to do additional work, if the work is not of a standard equivalent to STM's. To qualify for a diploma or degree from STM, the student must complete at least half the required credit hours from STM.
7. Duration Expected and Maximum Time Extension for Completing a Programme
 The maximum time for completing a study programme is extended only to students with special needs or students with special circumstances. The student concerned should send in the application to the Dean of Studies. The Faculty will determine the length of time to be extended on a case-by-case basis. All full-time students are expected to complete their respective academic programme as prescribed in the table below.

<i>Course</i>	<i>Duration Expected to Complete</i>	<i>Maximum Time Inclusive of Extension</i>
Diploma of Theology	2 years	4 years
Bachelor of Divinity	4 years	6 years
GradDip of Christian Studies	1 year	2 years
Master of Christian Studies	2 years	4 years
Master of Divinity	3 years	5 years
Master of Ministry	1 year (FT); 5 years (PT)	2 years (FT); 8 years (PT)
Doctor of Ministry	2-6 years	5-9 years
Master of Theology	18 mths (FT); 4 years (PT)	30 mths (FT); 5 years (PT)
Doctor of Theology (ATU)	3 years (FT); 6 years (PT)	4 years (FT); 7 years (PT)

FT: Full-time PT: Part-time

8. Further Studies
- 8.1 BTh/BD graduates may further their theological education by pursuing the MMin programme. The MMin programme is a one-year postgraduate programme of 30 credit hours. The applicant should possess a first degree in theology with GPA of 3.0 and above. They must also have a minimum of two years of ministerial experience.

- 8.2 BD and MDiv graduates may be allowed entrance into the MTh programme. The MTh programme will take a minimum of 18 months of full-time in-campus study. One may also opt to complete the programme on a part-time basis. The applicant should possess a first degree in theology with GPA of 3.2 and above. One must also have a minimum of two years of ministerial experience and fulfil all the necessary requirements depending on the area of concentration. An entrance examination may also be required.
- 8.3 MDiv, MMin and MTh graduates may be allowed entrance into the DMin programme. The DMin programme will take a minimum of two to six years. The applicant should possess a first degree in theology with GPA of 3.0 and above according to the standards of ATESEA with at least five years of ministerial experience. English track applicants are required to have TOEFL score of at least 550 (or 220 for computer-based) or IELTS score of at least 6.0.
- 8.4 MTh graduates may be allowed entrance into the ATU DTheol programme. The DTheol programme will take a minimum of three years of full-time in-campus study. One may also opt to complete the programme on a part-time basis. The applicant should possess a good MTh degree or its equivalent, where the candidate demonstrates research potential, and a good command of the English language (TOEFL – 600, computer-based, 250; IELTS 7.0).
- 8.5 Since the BTh, BD and MDiv degrees are accredited by ATESEA in 1984, many of our graduates have applied, studied and graduated at seminaries and universities. The academic standard of STM is well recognised.

9. Short Courses, Audit Students, Evening Classes and TEE

Some courses offered at the campus are open to church workers and church members to attend either for audit or for examination. Occasionally, classes are offered in the evenings or in conjunction with the TEE (Theological Education by Extension) Department. From time to time short study courses are also offered to meet the needs of the church. In particular cases, provision may be made for school leavers waiting for their examination results to attend day classes on a casual basis. Those outside of the Seremban area are encouraged to enrol in the TEE courses offered at various centres throughout the country. Please refer to the section on TEE Programmes.

Audit students are free to decide how much they undertake with written assignments and exams. Credit students must have a satisfactory level of attendance and complete written assignments and the examination to be eligible for academic credit on the same basis as full-time STM students.

Spouses of full-time students are encouraged to participate in the seminary life and to take up certain studies. The spouse may audit one course for free, and take any course for credit at 50% discount.

For details on in-campus programmes, daytime or evening, courses offered and timetable, please contact the Academic Office (academic@stm.edu.my) or the Dean of Studies.

10. Special Information for **International Students**

In recent years, more and more international students apply to study in STM. Most of them come from our neighbouring countries, such as, Indonesia, China and Myanmar. There are also those from Papua New Guinea, Vietnam, Cambodia, Pakistan, India, South Korea, Singapore, Japan and Germany.

10.1 Language Proficiency in English/Chinese is necessary for the courses applied in respective language department. Those applying for English department are required to have the following qualifications for their English language.

- TOEFL 500
- TOEFL Computer 173
- IELTS 5.0

- 10.2 You may either request us to send you a set of application forms or download the forms from our website (www.stm.edu.my).
- 10.3 When you submit your application, please ensure that the following documents reached us before **15 July**:
- (a) *Medical Examination, Self Reporting Questionnaire and Letters of Recommendation* duly completed and signed.
 - (b) Financial guarantee: A letter from the sponsor or proof of your financial ability if you are self-financing is required.
 - (c) All the supporting documents listed in the Application Form. Please ensure that the photocopies of all the certificates/diplomas/degrees and their transcripts have been duly certified as true copies.
 - (d) Bank draft in US\$50 or RM200 for Application Fee. The bank draft should be marked A/C Payee and made payable in favour of "*Seminari Theoloji Malaysia*".
 - (e) Send all the abovementioned documents to:
The Academic Office
Seminari Theoloji Malaysia
Taman South East, 70100 Seremban
Negeri Sembilan, Malaysia.
- 10.4 If your application is successful, the Academic Office will issue you a Letter of Acceptance for the coming academic year.
- 10.5 Visa Application Procedure:
- (a) Upon receiving the Letter of Acceptance from STM, you must provide us the following documents for the purpose of visa application.
 - 2 photocopies of your whole passport. This means every page including blank pages. (Please note that the photocopies should be in A4 size paper)
 - 6 copies of your passport-sized photographs.
 - Letter of employment from employer.
 - Letter from pastor to certify that the applicant is over 20 years old.
 - Letter from applicant's sponsor to certify that they are responsible for your studies at STM.
 - (b) After receiving all the documents in (a) above, we will proceed to apply for your student pass or professional visa at the Malaysian Immigration Department in Putrajaya, Malaysia. The student pass is obtained by STM on your behalf.
 - (c) If the application is approved by the Immigration Department, an Approval Letter will be issued for your studies in Malaysia. We will send you this Approval Letter. Upon the receipt of this letter, you are allowed to enter Malaysia as a student.
 - (d) However, if you are required by your country to obtain a visa before leaving the country, please ensure that you obtain a visa before leaving your country. Please make your visa application at the nearest Malaysian Embassy or Consulate Office.
 - (e) Students from China are required to obtain a visa before leaving the country. Please make your visa application at the Consulate Office in Guangzhou or Malaysian Embassy in Beijing.
- 10.6 Coming to Malaysia:
- (a) After you have received the Approval Letter from the Malaysian Immigration Department, you may purchase your return air ticket and come to Malaysia. Remember to bring along the letter, as you need to produce it for immigration clearance upon arrival at the Kuala Lumpur International Airport.

- (b) Before leaving your country, please notify us at least 7 working days in advance of the day of your departure.
- (c) For immigration clearance, you are required to produce the Approval Letter upon arrival. The Approval Letter is usually valid for three months from the date of issuance. A visa will be issued to you after your arrival in Malaysia.
- (d) Please note that if you do not have the Approval Letter to study from the Malaysian Immigration Department and if you still choose to travel to Malaysia, you may be detained at the Kuala Lumpur International Airport. A processing fee of RM500 will also be levied by the Malaysian Government for Journey Performed Visa (JP-Visa).

10.7 Should you need further information, you may contact us using the following:

- Telephone Number: 606-6322815
- Fax Number: 606-6329766
- Email Address: academic@stm.edu.my



In-Campus Programmes

The aim and purpose of STM is to provide our students with a wholistic training in academic studies, practical and pastoral skills, enrichment of public worship and growth in personal devotion. Academic training is only one part of the total seminary curriculum. The overall goal is to be used by God to train pastors and church workers to become emotionally and spiritually mature and to acquire sufficient intellectual and practical skills to carry out the tasks required of them in the Church and the nation. One is therefore reminded that the total curriculum consists of the following aspects:

- Spiritual Formation
- Academic Studies
- Field-Education Placement
- Pastoral Group System
- Community Life: Living together, games, chores, etc.

The structure of programmes given indicates the course requirements for each programme and the year in which core subjects are normally taken. There may be some variations from year to year as to when some courses are offered. The actual courses offered in each semester, including Electives (courses that are not compulsory), will be listed in the annual *Year Book*.

Course Descriptions are available from the Academic Office and our website, www.stm.edu.my.

Academic Regulations, such as guidelines on exams and assignments, marking and grading, warning against plagiarism, thesis writing, and bibliographical styles, are published in the *Student Handbook*.

1. Foundation Studies (30 Credit Hours)¹

Semester 1			Semester 2		
		Cr Hr			Cr Hr
TR101	Critical Reading & Writing	2	TR111	Reading & Reasoning	2
ENG111	English Grammar & Comprehension ²	3	CS901	Malaysian Studies ³	3
BS101	OT Books	2	BS121	NT Books	2
TR102	Inductive Bible Study	2	TR103	Inter-Personal Skills	2
TH801	Basic Christian Doctrines 1	2	TH802	Basic Christian Doctrines 2	2
	<i>Total Core Courses</i>	11		<i>Total Core Courses</i>	11
	Electives or Language ⁴	4		Electives	4
	<i>Total Credit Hours</i>	15		<i>Total Credit Hours</i>	15

<i>Breakdown:</i>	Cr Hr
Core Academic Load	22
Electives	8
Total	30

¹ A Foundation Year will be required for those with SPM certificate. The aggregate score should be 30 and below for the best 5 subjects – preferably with credit in English, and Maths, or in a Science or Arts subject.

² For the Chinese track students, “English Grammar and Comprehension” (3 cr hrs) will be replaced with “English for Theology” (ENG112; 3 cr hrs).

³ International students may opt for an elective course. Please refer to the Dean of Studies.

⁴ Electives: Tamil Language 1 (TAM111), which is 4 cr hrs, is a core course for all Tamil speaking students, and it replaces the electives. Chinese students may be required to take Chinese Language (CH101), which is also 4 cr hrs.

Note:

1. A student must attain a Grade of C+ (i.e., a CGPA of 3.0) before he/she can continue into the DipTh or BD programme proper.
2. In the event that there are less than 3 students, the Foundation Year may be replaced by an alternative arrangement.

2. Diploma of Theology (60 Credit Hours)

Year 1	Semester 1		Semester 2		
		Cr Hr			Cr Hr
TR101	Critical Reading & Writing ¹	2	BI102	Exegetical Method	3
BS103a	OT Survey	2	BS103b	Introduction to the OT	2
BS123a	NT Survey	2	BS123b	Introduction to the NT	2
CS812	Religions 2	2	CS811	Religions 1 ²	3
PS201	Christian Spirituality	2	PS501	Worship and Liturgy	2
GK111	Greek 1	3	TR111	Reading & Reasoning ³	2
FE101	Field Education & Seminar	1	FE101	Field Education & Seminar	1
	<i>Total Core Courses</i>	14		<i>Total Core Courses</i>	15
	<i>Electives</i>	1		<i>Electives</i>	0
	<i>Total Credit Hours</i>	15		<i>Total Credit Hours</i>	15

Year 2	Semester 1		Semester 2		
BS223	Mark ⁴	3	BS401	Poetic Books ⁵	3
CS112	Church History: AD30-1500	3	CS211	Church History: AD1500-Present	3
PS901	Evangelism in the Local Church	2	TH702	Philosophy of Religion	2
PS301	Homiletics 1	2	PS302	Homiletics 2	2
PS401	Foundation in Christian Education 1	2	PS402	Foundation in Christian Education 2	2
FE101	Field Education & Seminar	1	FE101	Field Education & Seminar	1
			CS401- CS404	Denominational Studies ⁶	2
	<i>Total Core Courses</i>	13		<i>Total Core Courses</i>	15
	<i>Electives</i>	2		<i>Electives</i>	0
	<i>Total Credit Hours</i>	15		<i>Total Credit Hours</i>	15

<i>Breakdown:</i>	Cr Hr
Core Academic Load	53
Field Education	4
Electives	3
Total	60

Note:

1. Students with a CGPA of 3.0 (C+) can apply to upgrade to the Bachelor of Divinity programme with an additional of 2 years of studies.

¹ Those who have taken the course during the Foundation Year may opt for an elective course.

² International students may opt for an elective course. Please refer to the Dean of Studies.

³ Those who have taken the course during the Foundation Year may opt for an elective course.

⁴ Exegesis on Mark (BS223) may be replaced by Romans (BS422) or 1 Corinthians (BS423).

⁵ Exegesis on Poetic Books (BS401) may be replaced by Wisdom Literature (BS501) or Prophetic Books (BS601).

⁶ Students from the Anglican, Methodist, Presbyterian and Lutheran denominations are required to take Denominational Studies as a core course. Students who are not from the abovementioned denominations may take it as an elective course.

2. Electives must be chosen from those being offered each semester to make up an average of 15 credit hours per semester.
3. 1st Year students are generally not allowed to take more than 15 credit hours per semester.

3. Bachelor of Divinity (120 Credit Hours)

Year 1	Semester 1		Semester 2		
		Cr Hr			Cr Hr
TR101	Critical Reading & Writing ¹	2	BI102	Exegetical Method	3
BS103a	OT Survey	2	BS103b	Introduction to the OT	2
BS123a	NT Survey	2	BS123b	Introduction to the NT	2
CS812	Religions 2	2	CS811	Religions 1 ²	3
PS201	Christian Spirituality	2	PS501	Worship and Liturgy	2
GK111	Greek 1	3	TR111	Reading & Reasoning ³	2
FE101	Field Education & Seminar	1	FE101	Field Education & Seminar	1
	<i>Total Core Courses</i>	14		<i>Total Core Courses</i>	15
	<i>Electives</i>	1		<i>Electives</i>	0
	<i>Total Credit Hours</i>	15		<i>Total Credit Hours</i>	15

Year 2	Semester 1		Semester 2		
BS223	Mark ⁴	3	BS401	Poetic Books ⁵	3
CS112	Church History: AD30-1500	3	CS211	Church History: AD1500-Present	3
PS901	Evangelism in the Local Church	2	TH702	Philosophy of Religion	2
PS301	Homiletics 1	2	PS302	Homiletics 2	2
PS401	Foundation in Christian Education 1	2	PS402	Foundation in Christian Education 2	2
FE101	Field Education & Seminar	1	FE101	Field Education & Seminar	1
			CS401- CS404	Denominational Studies ⁶	2
	<i>Total Core Courses</i>	13		<i>Total Core Courses</i>	15
	<i>Electives</i>	2		<i>Electives</i>	0
	<i>Total Credit Hours</i>	15		<i>Total Credit Hours</i>	15

Year 3	Semester 1		Semester 2		
BS422	Romans ⁷	3	BS601	Prophetic Books ⁸	3
TH103	Intro to Theology & Doctrine of God	3	TH104	Christology & Soteriology	3
PS601	Basic Counselling	2	PS612	Counselling (Specialised Area)	2
PS801	Pastoral Leadership & Ministry	2	PS812	Church Management & Admin	2
PS904	Missiology	2	PS701	Sexuality & Marriage	2
FE101	Field Education & Seminar	1	FE101	Field Education & Seminar	1

¹ Those who have taken the course during the Foundation Year may opt for an elective course.

² International students may opt for an elective course. Please refer to the Dean of Studies.

³ Those who have taken the course during the Foundation Year may opt for an elective course.

⁴ Exegesis on Mark (BS223) and Romans (BS422) are offered on a yearly rotation basis.

⁵ Exegesis on Poetic Books (BS401) may be replaced by Wisdom Literature (BS501).

⁶ Students from the Anglican, Methodist, Presbyterian and Lutheran denominations are required to take Denominational Studies as a core course. Students who are not from the abovementioned denominations may take it as an elective course.

⁷ Exegesis on Romans (BS422) may be replaced by 1 Corinthians (BS423).

⁸ Exegesis on Prophetic Books (BS601) and Poetic Books (BS401)/Wisdom Literature (BS501) is offered on a yearly rotation basis.

			CS301	Malaysian Church History ¹	2
	<i>Total Core Courses</i>	13		<i>Total Core Courses</i>	15
	<i>Electives</i>	2		<i>Electives</i>	0
	<i>Total Credit Hours</i>	15		<i>Total Credit Hours</i>	15

Year 4	Semester 1		Semester 2		
TH105	Pneumatology & Anthropology	3	TH106	Ecclesiology & Eschatology	3
TH114	Introduction to Christian Ethics	2	TH402	Issues in Contemporary Ethics	2
FE101	Field Education & Seminar	1	FE101	Field Education & Seminar	1
			TH301	Doing Theology in Asia	2
	<i>Total Core Courses</i>	6		<i>Total Core Courses</i>	8
	<i>Electives</i>	9		<i>Electives</i>	7
	<i>Total Credit Hours</i>	15		<i>Total Credit Hours</i>	15

<i>Breakdown:</i>	Cr Hr
Core Academic Load	91
Field Education	8
Electives	21
Total	120

Notes:

1. Electives must be chosen from those being offered each semester to make up an average of 15 credit hours per semester.
2. 1st Year students are generally not allowed to take more than 15 credit hours per semester.
3. "Thesis" is no longer compulsory for BD programme since 2009 in the new curriculum. If a BD student wishes to write a thesis, he/she must take TR201 Thesis Methodology in Year 3 and apply to the Faculty.

4. Graduate Diploma in Christian Studies (30 Credit Hours)

Semester 1			Semester 2		
		Cr Hr			Cr Hr
TR101	Critical Reading & Writing	2	BI102	Exegetical Method	3
BS103a	OT Survey	2	BS103b	Introduction to the OT	2
BS123a	NT Survey	2	BS123b	Introduction to the NT	2
CS811/ CS812	Religions 1 / Religions 2	3(2)	CS401- CS404	Denominational Studies ²	2
PS201	Christian Spirituality	2	PS501	Worship and Liturgy	2
GK111	Greek 1	3	GK112	Greek 2	2
FE101	Field Education & Seminar	1	FE101	Field Education & Seminar	1
	<i>Total Core Courses</i>	15(14)		<i>Total Core Courses</i>	15
	<i>Electives</i>	0(1)		<i>Electives</i>	0
	<i>Total Credit Hours</i>	15		<i>Total Credit Hours</i>	15

<i>Breakdown:</i>	Cr Hr
Core Academic Load	28(27)
Field Education	2
Electives	2(3)
Total	30

¹ International students may opt for an elective course. Please refer to the Dean of Studies.

² Students from the Anglican, Methodist, Presbyterian and Lutheran denominations are required to take Denominational Studies as a core course. Students who are not from the abovementioned denominations may take it as an elective course.

Note: Students can proceed to the MCS/MDiv programme with adjustment, additional studies and thesis.

5. Master of Christian Studies (60 Credit Hours)

Year 1	Semester 1		Semester 2		
		Cr Hr			Cr Hr
TR101	Critical Reading & Writing	2	BI102	Exegetical Method	3
BS103a	OT Survey	2	BS103b	Introduction to the OT	2
BS123a	NT Survey	2	BS123b	Introduction to the NT	2
CS811/ CS812	Religions 1 / Religions 2	3(2)	CS401- CS404	Denominational Studies ¹	2
PS201	Christian Spirituality	2	PS501	Worship and Liturgy	2
GK111	Greek 1	3	GK112	Greek 2	2
FE101	Field Education & Seminar	1	FE101	Field Education & Seminar	1
	<i>Total Core Courses</i>	15(14)		<i>Total Core Courses</i>	15
	<i>Electives</i>	0(1)		<i>Electives</i>	0
	<i>Total Credit Hours</i>	15		<i>Total Credit Hours</i>	15

Year 2	Semester 1		Semester 2		
BS223	Mark ²	3	BS401	Poetic Books ³	3
CS112	Church History: AD30-1500	3	CS211	Church History: AD1500-Present	3
TH103	Intro to Theology & Doctrine of God	3	TH104	Christology & Soteriology	3
PS611/ PS401	Basic Counselling or Foundation in Christian Education	2	CS301	Malaysian Church History ⁴	2
PS301	Homiletics 1	2			
TR201	Thesis Methodology	2			
FE101	Field Education & Seminar	1	FE101	Field Education & Seminar	1
	<i>Total Core Courses</i>	16		<i>Total Core Courses</i>	12
	<i>Electives</i>	0		<i>Electives</i>	2
	<i>Total Credit Hours</i>	16		<i>Total Credit Hours</i>	14

<i>Breakdown:</i>	Cr Hr
Core Academic Load	54(53)
Field Education	4
Electives	2(3)
Total	60

6. Master of Divinity (90 Credit Hours)

Year 1	Semester 1		Semester 2		
		Cr Hr			Cr Hr
TR101	Critical Reading & Writing	2	BI102	Exegetical Method	3
BS103a	OT Survey	2	BS103b	Introduction to the OT	2

¹ Students from the Anglican, Methodist, Presbyterian and Lutheran denominations are required to take Denominational Studies as a core course. Students who are not from the abovementioned denominations may take it as an elective course.

² Exegesis on Mark (BS223) may be replaced by Romans (BS422) or 1 Corinthians (BS423).

³ Exegesis on Poetic Books (BS401) may be replaced by Wisdom Literature (BS501) or Prophetic Books (BS601).

⁴ International students may opt for an elective course. Please refer to the Dean of Studies.

BS123a	NT Survey	2	BS123b	Introduction to the NT	2
CS811/ CS812	Religions 1 / Religions 2	3(2)	CS401- CS404	Denominational Studies ¹	2
PS201	Christian Spirituality	2	PS501	Worship and Liturgy	2
GK111	Greek 1	3	GK112	Greek 2	2
FE101	Field Education & Seminar	1	FE101	Field Education & Seminar	1
	<i>Total Core Courses</i>	15(14)		<i>Total Core Courses</i>	15
	<i>Electives</i>	0(1)		<i>Electives</i>	0
	<i>Total Credit Hours</i>	15		<i>Total Credit Hours</i>	15

Year 2	Semester 1		Semester 2		
BS223	Mark ²	3	BS401	Poetic Books ³	3
CS112	Church History: AD30-1500	3	CS211	Church History: AD1500-Present	3
TH103	Intro to Theology & Doctrine of God	3	TH104	Christology & Soteriology	3
PS611	Basic Counselling or	2	CS301	Malaysian Church History ⁴	2
PS401	Foundation in Christian Education	2			
PS301	Homiletics 1	2			
TR201	Thesis Methodology	2			
FE101	Field Education & Seminar	1	FE101	Field Education & Seminar	1
	<i>Total Core Courses</i>	16		<i>Total Core Courses</i>	12
	<i>Electives</i>	0		<i>Electives</i>	2
	<i>Total Credit Hours</i>	16		<i>Total Credit Hours</i>	14

Year 3	Semester 1		Semester 2		
BS422	Romans ⁵	3	BS601	Prophetic Books ⁶	3
TH105	Pneumatology & Anthropology	3	TH106	Eschatology & Eschatology	3
TH411	Introduction to Christian Ethics	2	TH402	Issues in Contemporary Ethics	2
PS801	Pastoral Leadership & Ministry	2	TH302	Doing Theology in Asia	2
TR301	Thesis 1	4	TR302	Thesis 2	2
FE101	Field Education & Seminar	1	FE101	Field Education & Seminar	1
	<i>Total Core Courses</i>	15		<i>Total Core Courses</i>	13
	<i>Electives</i>	0		<i>Electives</i>	2
	<i>Total Credit Hours</i>	15		<i>Total Credit Hours</i>	15

<i>Breakdown:</i>	Cr Hr
Core Academic Load	74(73)
Field Education	6
Thesis	6
Electives	4(5)
Total	90

Notes: Electives must be chosen from those being offered each semester to make up an average of 15 credit hours per semester.

¹ Students from the Anglican, Methodist, Presbyterian and Lutheran denominations are required to take Denominational Studies as a core course. Students who are not from the abovementioned denominations may take it as an elective course.

² Exegesis on Mark (BS223) and Romans (BS422) are offered on a yearly rotation basis.

³ Exegesis on Poetic Books (BS401) may be replaced by Wisdom Literature (BS501).

⁴ International students may opt for an elective course. Please refer to the Dean of Studies.

⁵ Exegesis on Romans (BS422) may be replaced by 1 Corinthians (BS423).

⁶ Exegesis on Prophetic Books (BS601) and Poetic Books (BS401)/Wisdom Literature (BS501) is offered on a yearly rotation basis.

Field Education

Field Education is an educational method that seeks to incorporate into the curriculum, regular supervised and evaluated opportunities of interrelating theological studies and experience in actual ministry for the students. It is therefore an integral part of the overall curriculum and ministerial training programme of the Seminary. All students are required to participate in the programme during their training.

The purpose of Field Education is to enhance each student's preparation for Christian ministry by providing supervised learning experiences in various ministry settings: local churches in rural and urban areas; mission and outreach in rural areas such as estates and in urban settings such as amongst squatters and the urban poor; and centres of Christian care, rehabilitation and welfare work.

These learning experiences are designed and arranged by means of a three-way contract between the seminary and the students, participating churches or centres, and the Bishops or Conference Presidents. These placements provide vital pastoral experiences and exposures for students. Case material from placement experiences is also used in seminars in mission studies and pastoral theology. In order to enhance the learning experience, Field Education Seminars are organised by the Field Education Directors on a monthly basis for all full-time students.

Full-time students are involved in these three types of placement:

- Church visitation for 1st year students in the first semester
- Weekend Placement
- Eight-week Year-end Placement.

Details of the Field Education Programme are published in the *Student Handbook*.



Theological Education by Extension (TEE) Programmes

STM offers opportunities for those who are not able to enrol for full-time study to avail them to theological education. The TEE programme covers three language departments, i.e., English, Chinese and Tamil Departments. The TEE Departments offer modular courses leading to the Certificate of Christian Ministry (CertCM) and the Diploma of Christian Ministry (DipCM) for undergraduates, Graduate Diploma of Christian Studies (GradDipCS) and the Master of Christian Studies (MCS) for university graduates. The modular courses are usually offered in units of 3 credit hours. These programmes are designed specifically for the training and advancement of lay leadership in the church, though some may consider them for ministerial training.

1. TEE Study Programmes:

1.1. The Certificate of Christian Ministry (CertCM) Programme:

Core Courses and Credit Hours		12
Introduction to the OT	3	
Introduction to the NT	3	
Christian Theology I	3	
Biblical Interpretation	3	
Electives (equivalent to 6 courses)		18
Total Credit Hour		30

1.2 The Diploma of Christian Ministry (DipCM) Programme:

Core Courses and Credit Hours		24
Introduction to the OT	3	
Introduction to the NT	3	
Christian Theology 1	3	
Biblical Interpretation	3	
Interpreting the OT	3	
Interpreting the NT	3	
Christian Theology 2	3	
Pastoral Leadership & Ministry	3	
Electives (equivalent to 12 courses)		36
Total Credit Hour		60

1.3 The Graduate Diploma of Christian Studies (GradDipCS) Programme:

Core Courses and Credit Hours		12
Introduction to the OT	3	
Introduction to the NT	3	
Christian Theology I	3	
Biblical Interpretation	3	
Electives (equivalent to 6 courses)		18
Total Credit Hour		30

1.4 The Master of Christian Studies (MCS) Programme:

Core Courses and Credit Hours		24
Introduction to the OT	3	
Introduction to the NT	3	
Christian Theology 1	3	
Biblical Interpretation	3	
Interpreting the OT	3	

Interpreting the NT	3	
Christian Theology 2	3	
Pastoral Leadership & Ministry	3	
Electives (equivalent to 12 courses)		36
Total Credit Hour		60

2. Admission Requirements:

2.1 For CertCM and DipCM:

- SPM Grade III certificate or its equivalent with an aggregate of 35 or less for best 5 subjects. The UEC from Chinese High School is recognised.
- A strong commitment for Christian ministry and actively involved in local church ministry.
- Language Proficiency, whether English, Mandarin or Tamil.
- Those who are 30 years old & above without the necessary academic qualifications may be considered for admission into the programme.

2.2 For GradDipCS and MCS:

- The prospective applicant should have a bachelor's degree from a recognised university or its equivalent.
- A strong commitment for Christian ministry and actively involved in local church ministry.
- Language Proficiency, whether English, Mandarin or Tamil.

3. Duration of Study

- The CertCM (TEE) and GradDipCS (TEE), which are 30 credit hours, can be completed in two to four years depending on the number of courses taken each year.
- The DipCM (TEE) and MCS (TEE), which are 60 credit hours, can be completed between three to seven years, depending on the number of courses taken each year.

4. Special Programmes in English:

- The CertCM in Social Ministry (TEE) is a collaboration between Malaysian Care, Bible College of Malaysia and STM. It is a 30 credit hours study programme consisting of 6 required courses and 4 core courses.
- The CertCM/GradDipCS in Youth Ministry (TEE) is a 30 credit hours study programme consisting of 5 required courses, 4 core courses and 1 elective.
- Admission Requirements: same as the DipCM and GradDipCS above.

5. Specific Bachelor of Theology (BTh) Programme in Tamil:

Core Courses and Credit Hours	
Field Education (1 credit hour per semester x 7)	7
Mission Exposure	3
English Language Classes (over 2 years)	3
Denomination Studies	3
Children/Youth Work	3
Church Growth	3
Gospel Media & Communication	3
Theology in Asia – Indian Christian Theology	3
Modern Religious and Secular Movements	3
Malaysian Church History	3
Christian Ethics	3

Christian Spirituality	3
Counseling, Sex & Marriage	3
Christian Social Ministry	3
1 Corinthians	3
Prophetic Books	3
Liturgy & Worship	3
Homiletics II	3
Critical Reading & Writing	3
Total Credit Hour	61

Notes:

- Admission Requirement: Tamil DipCM (TEE) or its equivalent.
- Duration of Study: It can be completed between three to seven years, depending on the number of courses taken each year.



6. Specific Bachelor of Theology (BTh) Programme in Chinese:

Core Courses and Credit Hours		30
Introduction to OT	3	
Introduction to NT	3	
Pneumatology & Anthropology	3	
Evangelism and Church Planting	3	
Interpreting the OT 2	3	
Interpreting the NT 2	3	
Ecclesiology & Eschatology	3	
Christian Ethics	3	
Field Education (1 st Year)	2	
Field Education (2 nd Year)	2	
Field Education (3 rd Year)	2	
Electives (equivalent to 10 courses)		30
Total Credit Hour		60

Notes:

- Admission Requirement: Chinese DipCM (TEE) or its equivalent.
- Duration of Study: It can be completed between three to seven years, depending on the number of courses taken each year.
- The whole year Field Education merits 2 credit hours. The requirements are: (1) the church or organisation has to be approved by the TEE Director. (2) A reflection paper of 2000-3000 words. (3) An evaluation form to be completed by the pastor-in-charge.

7. Centres for Studies:

	English	Chinese	Tamil
Seremban STM Campus. Tel: 06-6322815	✓	✓	✓
CTEE, Luther Centre, No. 6 Jalan Utara, 46200 Petaling Jaya, Selangor. Tel: 03-79601867	✓	✓	
Trinity Methodist Church, 57, Ellis Road, 93300 Kuching, Sarawak. Tel: 082-417015	✓		
The CertCM in Social Ministry (TEE): Malaysian Care, 15, Jalan 3/146, Metro Centre, Bandar Tasik Selatan, 57000 Kuala Lumpur. Tel: 03-90582102	✓		

8. Partner Centers:

At the moment there are three organisations working in partnership with STM in providing Theological Education in their contexts and according to the specific needs. They are:

- Ipoh Theological Center (ITC), based at St Peter's Anglican Church, Ipoh.
- SiYuan Theological Center, based at Pioneer Chinese Methodist Church, Sitiawan.
- SAM, based at ITC.

9. Contact Persons:

- English TEE: Director, Pastor Wong Moi Lee (moilee@stm.edu.my)
- Chinese TEE: Director, Pastor Elaine Goh (elainegoh@stm.edu.my)
- Tamil TEE: Director, Rev Dr Joseph Komar (joe8162915@yahoo.com)

10. Further Studies

TEE students who have completed any of the TEE programmes can further their theological studies in-campus. For more details, please contact the TEE Director and/or the Dean of Studies.

Advanced Ministerial Studies Programmes

STM is fully aware of the need for continuing theological education for pastors and church workers. In order to meet the increasing demand for pastoral development, renewal and enrichment, we offer Advanced Ministerial Studies for pastors and church leaders. The Master of Ministry programme is designed to encourage pastors to develop further, to refresh their vision and spirituality, to upgrade their skills and knowledge to meet the challenges of ministries ahead.

The Doctor of Ministry programme is an advanced professional programme, which was introduced in 2008. It provides people in full-time vocational Christian ministry, including pastors, missionaries and church leaders, with an avenue to continue learning and equipping themselves. It seeks to enable programme participants to stay at the cutting edge of ministry and mission in changing times, by enhancing their ministerial competency, effectiveness and fruitfulness. It also aims to be some form of self-healing and a source of personal renewal.

1. The Master of Ministry Programme

1.1 Courses

There are 10 modules of 3 credit hours each, encompassing a total of 30 credit hours. The basic structure is as below:

(a) Three (3) Basic Modules

- Pastoral Theology
- Nature & Mission of the Church
- Preaching on NT/OT: Hermeneutics & Homiletics

(b) Seven (7) Electives from

- Expository Preaching & Teaching
- Leadership Development
- Pastoral Leadership & Ministry
- Pastoral Spirituality
- Pastoral Counselling
- Spiritual Direction & Mentoring
- Strategies for Church Growth
- Ministry & Cultural Context
- Church Management
- Advanced Seminars on Christian Education
- Missiology and Mission Studies
- Exegesis on set text
- Project Paper: 2 modules (optional)

At the moment two modules will be offered annually. Normally they are offered in March and July respectively.

1.2 Duration of Study: One year of full-time studies or five years of part-time studies.

1.3 Admission Requirements

- a. Applicants for enrolment must hold a primary theological degree according to the standards of ATESEA for an accredited BD or its equivalent.
- b. Applicants should normally have two or more years of ministerial experience.

The Doctor of Ministry Programme

2.1 Programme Philosophy

- The programme seeks to integrate "Head" or "Knowing" (biblical and theological study and reflection), "Heart" or "Being" (character and spiritual formation) and "Hand" or "Doing" (ministerial skills, practices and competency).

- The programme seeks to integrate the “Text” (Bible and Theology), “Person” (Pastor/Church Leader), and “Context” (Church and World) for ministry.
- Other than class lectures and personal independent research, learning and writing, it encourages on-going group interaction, accountability and support among the participants.

2.2 Application and Admission:

- (a) *Requirement for Ministerial Experience:* Upon completing their first theological degree, applicants are required to have at least five years of full-time Christian vocational ministry, such as involvement in pastoral ministry, missionary activity and/or theological education.
- (b) *English Language Proficiency:* English Track applicants are required to have TOEFL score of at least 550 (or 220 for computer-based) or IELTS score of at least 6.
- (c) *Academic Requirement:* Applicants for enrolment must possess a Master of Divinity or its equivalent. The Master of Ministry graduates are expected with extra academic loading; the Master of Theology graduates may be exempted for certain credit hours.
- (d) *Entrance GPA requirement:* A GPA of 3.0 and above (on a 4.0 scale) is required. This is equivalent to a C+ using the STM scale.

2.3 Entrance Levels and Course Load

Modules & Credit Hours	MTh Degree Holder	MDiv Degree Holder	MMin Degree Holder
3 Core Modules	12 cr hs	12 cr hs	12 cr hs
Electives	4 cr hs (=1 module)	20 cr hs (=5 modules)	28 cr hs (=7 modules)
Research Methodology	4 cr hs	4 cr hs	4 cr hs
Thesis (Project Paper)	12 cr hs	12 cr hs	12 cr hs
Total Credit Hours	32 cr hs	48 cr hs	56 cr hs

Note:

- The DMin Modules are structured as 4 credit hours each.
- Those with a MTh degree, which includes a thesis component, will be exempted from Research Methodology. However, they are required to formulate their thesis proposal on their own and submit it to the Postgraduate Studies Office for approval before they begin their last 2 courses.
- Those with qualifications other than the above stated will be evaluated accordingly.

2.5 Medium of Instruction

There are two language tracks: English and Chinese.

2.6 Number of Students Admitted

A maximum of 30 active participants in each track will be admitted in a single year.

2.7 Duration of Study

The Programme is meant to be an in-service programme allowing participants to complete their studies while engaged in full-time ministry.

<i>Entrance</i>	<i>Normal Duration</i>	<i>Maximum Duration</i>
Master of Theology Degree Holder	2-3 years	5 years

Master of Divinity Degree Holder	4-5 years	8 years
Master of Ministry Degree Holder	5-6 years	9 years

Note:

- Application for extension beyond the maximum time-frame will be allowed under special circumstances. The extension must not exceed one year beyond the maximum time-frame allowed.
- Participants who are unable to complete the Programme within the maximum time frame stipulated (including the extension) will be withdrawn from the Programme. A person who has been withdrawn from the Programme may re-apply for admission into the Programme but they must start from the beginning. No transfer of credits from courses completed will be allowed.
- While the Programme is structured as a part-time in-service programme, it is possible to make special arrangements for those who wish to take leave of absence from their ministry to do one year (or longer) of full-time study, especially for writing their thesis.

2.8 Courses

(a) *Three (3) Core Modules*

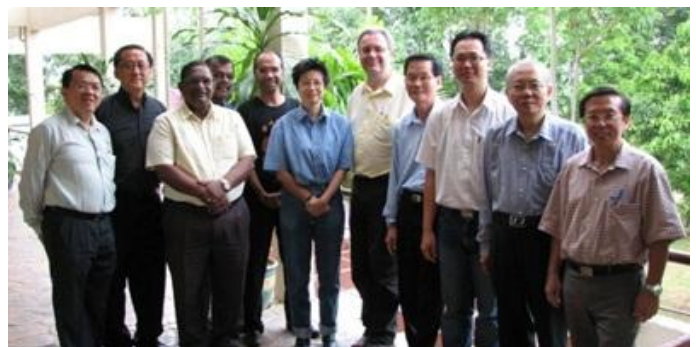
- Theology of Minister and Ministry
- Church, World and Mission in the 21st Century
- Advanced Biblical Hermeneutics and Homiletics

(b) *Electives in the following areas:*

- Spiritual Formation
- Biblical & Theological Studies & Ethics
- Worship, Liturgy, Sacraments & Preaching
- Mission, Evangelism & Church Growth
- Christian Leadership & Mentoring
- Christian Education & Discipleship
- Pastoral Care & Counseling
- Religious Studies
- Contemporary Issues & Marketplace Ministry
- Behavioral & Social Sciences
- Others

Contact

For further details and registration regarding MMin and DMin programme, please contact our Director of Advanced Ministerial Studies, Rev Dr Philip Siew (philipsiew@yahoo.com).



Postgraduate Studies Programmes

1. **Master of Theology Programme**

STM is pleased to announce that a newly revised and exciting Master of Theology (MTh) programme that is considerably flexible, individually designed, and contextually relevant is now being offered with effect from 2010. This new programme replaces the Master of Theology offered under the auspices of the South East Asia Graduate School of Theology (SEAGST) of the Association of Theological Education in Southeast Asia (ATESEA) through STM since 1995.

The MTh Degree is an advanced postgraduate research programme specially designed to provide specialised training in effective leadership in Christian ministry, professional pastoral training, and advanced theological research and teaching. It is designed in response to the urgent need for competent theological educators and advanced theological education in the region, and in keeping with the highest tradition of and excellence in Christian scholarship. It allows students to gain greater competency and skills in an area of specialization by employing the most valuable and latest research methods and resources available for the areas of concentration. Since the MTh is a rigorous and research-oriented programme, it also serves as a good preparatory degree for further advanced research degrees such as PhD or Doctor of Theology. The MTh can be taken either on a full-time or part-time basis.

1.1 Areas of Concentration

At present, STM offers the MTh programme in the following areas of concentration:

- Old Testament
- New Testament
- Biblical Theology
- Biblical Interpretation
- Christian Theology
- Pastoral Theology
- Missiology
- Church History
- Christian Education
- Church and Society

The above areas of concentration are offered on the basis of the availability of supervisors. STM reserves the right not to offer any of these areas of concentration at anytime. Please enquire at the time of application.

1.2 Degree Requirements

Students participating in the MTh programme must complete a total of 8 courses with a CGPA of 3.2 (or an average B-) or higher (comprising a core course on "Doing Theology in Asia", 5 courses in an area of concentration, and 2 electives) and a thesis in the area of concentration.

- a. Core Course: "Doing Theologies in Asia" is a required course to be taken by all students. Exemption may be granted if the student has previously taken a similar course as evidenced in the transcript at the time of application. If exemption is granted, the candidate will have the flexibility of taking an additional elective.
- b. Area of Concentration: At least 5 courses will be taken in an area of concentration. These courses will be determined in consultation with the MTh Study Committee, and may comprise both coursework and individual guided research.

- c. Electives: A total of 2 electives (excluding the exempted Core Course, if granted) may be taken in an area outside of but related to the student's area of concentration subject to the approval of the MTh Study Committee.
- d. Thesis: A thesis with a length of 20,000-30,000 words in English (excluding footnotes and bibliography) (or 35,000-50,000 words in Chinese), written in the area of concentration, is required. The thesis is to be defended in a viva voce.
- e. Requirement for Courses: Typically a paper of 5,000 words (or 8,500 words in Chinese) is required for each course. In addition, a written exam may also be required. The coursework can be a combination of the following:
 - courses designed exclusively for advanced level studies,
 - MDiv/MMin courses which are being offered by the course instructor on an advanced level for MTh students,
 - independent guided study, or
 - any other courses approved by the MTh Study Committee
- f. Approved Study Programme Plan: Upon matriculation, students are required to meet with their MTh Director to establish a study programme plan. This plan will list all the courses the student intends to complete in order to fulfill his or her own programme requirements. A copy of the study programme plan will be kept by the MTh Study Committee for degree tracking purposes.
- g. Comprehensive Examination: After successful completion of the coursework prior to writing the thesis, the students may be required to sit for a comprehensive examination. The purpose of this examination is to test the students' ability to integrate what they have studied and to relate it to an Asian setting. The examination format may take a written examination, an oral examination, or a combination of both. Total time allowed for this examination is two periods of three hours each, or a total of six hours. The questions for the comprehensive examination will be set by MTh Study Committee in consultation with instructors involved in the student's study programme plan.

1.3 MTh Research Seminar

All students are required to participate in the MTh Research Seminar, held regularly during the semester. Dates are normally announced in the beginning of each semester.

1.4 Medium of Instruction

The MTh is offered in both the English and Chinese tracks. Candidates should indicate their choice at the time of application.

1.5 Duration of the Programme

- a. Period of completion of study: The programme requires a minimum of 18 months for full-time students to complete the MTh programme. A maximum of two years is allowed for full-time students and a maximum of four years is allowed for part-time students for completion of the MTh degree programme. This period of completion of study does not include work on prerequisites, or any pre-MTh requirements.
- b. Full-time students may apply for a maximum of one year extension of their course while part-time students may apply for a maximum of two years extension. The approval for application for extension is subject to the satisfactory progress made in the programme of studies.
- c. A Continuation Fee of RM500 per year is payable upon application for any extension beyond the period of completion. The Continuation Fee payable is in addition to the payment of any outstanding tuition/thesis supervision fees.

1.6 Admission Requirements

- a. Applicants to the MTh programme must hold a strong first theological degree (usually MDiv or BD) or its equivalent from a recognized institution with a CGPA of 3.2 and above (or an average of B- and above based on STM's academic standard).
- b. Applicants may be required to sit for an entrance examination.
- c. Applicants must complete full application formalities.
- d. Applicants specializing in Old Testament or New Testament must demonstrate competency in Hebrew or Greek respectively based on transcript evaluation and/or entrance examination.
- e. Applicants where prerequisites for the MTh programme are lacking based on transcript evaluation may be required to undertake the Pre-MTh programme in the relevant areas of concentration.
- f. English medium international applicants must possess English language competency: TOEFL – 575 paper-based, 233 computer-based, 91 internet-based; IELTS – 6.5, or equivalent.
- g. Chinese medium international applicants must possess English language competency: TOEFL – 500 paper-based, 173 computer-based, 61 internet-based; IELTS – 5.0, or equivalent.

1.7 Entrance Examinations

The applicants may be required to demonstrate their potential for advanced postgraduate theological study and their competence in the basic disciplines at the first degree level by passing either a written examination, or an oral examination, or a combination of both, to be decided by the MTh Study Committee.

The written examination may comprise up to three papers from different theological disciplines which should include the area of concentration. These papers may include a combination of research papers and on-site written examination. The typical length of a research paper shall be 12-15 pages, sized A4 in double-spaced typescript. The papers must demonstrate an acceptable level of critical reflection of the subject matter and knowledge of the mechanics of paper writing (e.g. the use of footnotes, bibliography, etc).

The entrance examination may be written in English (for the English track) or Chinese (for the Chinese track).

1.8 The Pre-Master of Theology Programme

The Pre-MTh provides a bridging programme to upskill prospective students seeking admission to the MTh degree where prerequisites may be lacking based on transcript evaluation or the results of the entrance examination. The subjects and total credit hours to be taken are decided upon consultation with the MTh Study Committee, and may take up to a maximum of 45-credit hour or an equivalent of 1.5 years of full-time studies.

The Pre-MTh programme DOES NOT lead to an award of any degree, nor can credits be transferred to the MTh programme.

1.9 Submission Procedures

Please ensure that the following are sent together with your application form:

- a. One recent passport-size photograph.
- b. One copy of the official transcript of grades in applicant's previous post-secondary school studies (i.e. college, university and/or theological college).
- c. One copy of Certificate of English language competency (TOEFL/IELTS), if applicable.
- d. An up-to-date medical report, including chest X-ray report (applicable only for full-time studies).
- e. Statement of intention of approximately 500 words stating your purpose in seeking entrance to Seminari Theoloji Malaysia.

- f. A study proposal for the intended research of approximately 2,000 words in English (or 3,000 words in Chinese).
- g. Application fee: RM150 or US\$50 (for international applicants).
- h. International students will need to provide proof of funding in the form of bank draft amounting to RM21,000 or US\$7,000.
- i. Any other documents that may be required by the Director of Postgraduate Studies. You may download the full application pack from our website (www.stm.edu.my).

1.10 Letters of Recommendation

- Two Letters of Recommendation are required. The recommendations should be provided by someone who knows you well and able to provide all the required information.
- The first recommendation letter shall be from the Principal or a faculty member of the seminary/theological college in which the applicant graduated. It should provide information on the applicant's academic standard, achievement, and ability to pursue the MTh programme.
- The second recommendation letter shall be from a senior official (Bishop, Moderator, President, Senior Pastor, etc) of the applicant's denomination or church. It should provide information on the applicant's personality, character, strength, etc.
- Please request your referees to send the letter of recommendation directly to the Director of Postgraduate Studies.

1.11 Application Deadline

Although the MTh is a research-based programme, and students may begin their studies anytime, it is advisable that application be submitted at least 3 months before the intended date of matriculation for Malaysians and 6 months for international applicants. We strongly advise international students to begin their study at the beginning of our academic year which falls on the first week of January.

1.12 Mailing Instructions

- Application form, together with all the supporting documents stated in the "Submission Procedures" and the application fee, should be sent to:

Rev Dr Lim Kar Yong
Director of Postgraduate Studies
STM
Taman South East, 70100 Seremban
Negeri Sembilan
Malaysia.
- The application fee may be paid by cheque or bank draft in the name of "Seminari Teoloji Malaysia", or by telegraphic transfer or direct payment into STM's Public Bank Account (3064759900).
- The application pack may also be email to: karyong@stm.edu.my.
- Please note that if you submit your application via email, it will not be processed until the application fee is received.

1.13 Appendix: List of Master of Theology Graduates

Name	Graduation	Thesis Title
Jason Selvaraj THANGASAMY	2001	Freire's Liberation Methodology in Adult Christian Education in the Anglican church of West Malaysia

Bonnie Anak SEDAU	2002	Authentic Communication of the Gospel to the Iban in the light of Their Religious World View
CHAN Mun Kwan	2002	The Pastoral Life and Practice of the Apostle Paul
Steven ABBAROW	2002	Towards a Social Trinitarian Theology of Family
TEE Heng Peng	2003	False Teaching in Colossians and Paul's Response
Armin SUKRI	2005	Missionary Movements among the Bugis in the midst of Islamic Resurgence in South Sulawesi
LAU King Lang	2005	Education For Community: Exploring the Faith Community Model As An Alternate Approach For Church Education
BAU Chian Hui	2006	New Wine in New Wine Skin: The Friendship Model of Pastoral Care among the Possibly Postmodern Chinese Youth in the Diocese of West Malaysia
Jamal Anak SENADA	2006	Beyond the Church Walls: The Roles of the Iban Anglican Christian Church Leaders in Nation Building in Sarawak, Malaysia
Edwin AYABO	2007	The Temptation of Jesus: Matthew 4:1-11
LAW Choon Sii	2008	An Exegetical Study of Romans 2:12-16: Paul and Justification by Law [Chinese]
Lal RAWN	2009	The Concept of Indwelling Presence of the Spirit-Paraclete in Jesus' Farewell Discourse in John 14-16
TAN Geok Hock	2009	A Proposal for the Structure of Luke's Travel Narrative
Sivin KIT	2010	A Trinitarian Public Theology: Malaysian Churches and Civil Society
Francis WAN	2010	A Study of the Preaching Ministry from the Perspective of Communication [Chinese]
Thomas CHIN Shen Loong	2011	Christian Nurture and Aging: Implications for Future Older Adults' Ministry in Malaysia
LEE Kong Yee	2011	Ministry of Evangelism and Social Action is Distinct, Yet One Holistic Mission of the Salvation Army in Malaysia



(2010)

2. Doctor of Theology Programme (ATU)

2.1 Introduction:

The Doctor of Theology (DTheol) is a postgraduate research programme offered under ATU (ATESEA Theological Union) with the following purpose:

- To promote advanced theological research and reflection;
- To encourage faculty development and academic careers in theological education;
- To promote theological dialogue with societies and cultures and religions in Asia.

STM being one of the "Centers for Theological Excellence" recognised by ATESEA, we assist ATU in providing supervision and library research.¹ Candidates can do the DTheol programme in STM in either English or Chinese language.



2.2 Admissions Requirement:

- Applicants for admission must hold the SEAGST MTheol degree or its equivalent from a recognized institution.
- English medium applicants must possess English language competency: TOEFL – 600 (Computer-based, 250); IELTS – 7.5-8.0
- Chinese medium applicants must possess English language competency: TOEFL – 500 (Computer-based, 173); IELTS – 5.0

2.3 Programme of Studies:

The programme is designed to ensure that the candidates acquire the required tools for scholarly competence in their field of studies, have exposure in the depth and breath of the basic literature of the field, and developed a working knowledge of the histories and cultures of Asia.

2.4 Fields of study:

- (a) Bible and Interpretations
 - Old Testament
 - New Testament
 - Asian Hermeneutics
- (b) Theological Constructions in Asia
 - Contextual Interpretations of Faith
 - Theology of the Christian Tradition
 - Christian Ethics
 - History of Christianity
 - Asian Religions/People's Movements
- (c) Religion, Culture and Life and Witness of the Church
 - Philosophy of Religion
 - Mission and Witness
 - Ecumenics
 - Life and Witness of the Church
 - Christian Education
 - Liturgy and Worship

¹ The other Centers are Trinity Theological College, Singapore; Satya Wacana Christian University, Indonesia; Sekolah Tinggi Teologi Jakarta, Indonesia; Duta Wacana Christian University, Indonesia; Lutheran Theological Seminary, Hong Kong; Divinity School of Chung Chi College, Chinese University of Hong Kong; Myanmar Institute of Theology, Myanmar; Sabah Theological Seminar, Malaysia; Divinity School of Siliman University, Philippines; Adventist International Institute of Advance Studies, Philippines; Tainan Theological College and Seminary, Taiwan.

- (d) Gender and the Marginalized
 - Gender Studies
 - Indigenous Communities Studies

2.5 Requirements for Graduation:

To graduate, candidates must successfully fulfill the following:

- (a) Two Methodology Seminars, which will be conducted centrally by ATU;
- (b) Three areas of research, in which papers pertaining to the chosen field are written;
- (c) A comprehensive examination; and
- (d) A dissertation of not more than 100,000 words.

2.6 Duration and Time Limitation:

- The DTheol study programme is designed for completion within a minimum of three (3) years and a maximum of six (6) years. A student may apply for a one (1) year extension upon the approval of the ATU Senate.
- The study in the area of concentration will normally take two academic years, and the balance for individual research and writing.

2.7 Tuition and Fees:

- (a) Application Fees: USD30 (from within the region); USD50 (from outside the region)
- (b) Tuition Fees: RM9,600 (RM3,200 x 3 modules; charged by STM)
- (c) Thesis Supervision Fee: RM6,400 (charged by STM)
- (d) Graduation Fee: USD50 (charged by ATU)
- (e) Graduation Fee: RM300 (charged by STM)
- (f) Continuation Fee: RM1000 per year (charged by STM, if applicable)

2.8 Formal applications for admission are to be sent to:

The Office of the Dean of ATU
Henry Luce III Library
Central Philippine University
Jaro, Iloilo City 5000
Philippines.
Email: equina_limuel@yahoo.com

Contact

For further details and registration for the Master of Theology, please contact our Director of Postgraduate Studies, Rev Dr Lim Kar Yong (karyong@stm.edu.my). Dr Lim can also assist you in finding out more about the DTheol (ATU) programme.

Fees

STM is the official training college of the Anglican, Lutheran, Methodist and Presbyterian churches. Denominationally approved or recommended students are normally given financial support by their own diocese, annual conference or church upon acceptance by the seminary. Usually the scholarships granted by the churches are sufficient to cover the student's tuition, accommodation, basic text books and personal expenditure. These scholarships are administered by the respective churches, and applicants should apply to their respective denominations. Private or self-financed students are also encouraged to seek sponsorship from their local churches, friends and relatives.

At the moment, students at STM are charged less than 50% of the actual cost of their training. The balance of the expenses for training comes from donations by supporting churches and church members.

The fees below, chargeable in Ringgit Malaysia (RM), are subject to changes.

For full-time students, fees must be paid at the beginning of each semester or academic year. All fees paid are non-refundable and non-transferable. For part-time programmes, fees must be paid at registration for the course.

1. In-Campus Programmes Fees

1.1 Full-time Church Sponsored Student – per person per year

	Residential			Non-Residential
	Twin Sharing	Single Room	Married Quarters	
Tuition Fee	2,500	2,500	2,500	2,500
Food ¹	2,400	2,400	2,400	-
Accommodation	1,200	1,800	2,400 ²	-
Medical Insurance ³	440	440	440	440
Book Allowance	800	800	800	800
Pocket Allowance ⁴	1,200	1,200	1,200	1,200
Internet Access, etc.	70	70	70	70
Total Fees	8,610	9,210	9,810	5,010

1.2 Full-time Self-Financed Student – per person per year

	Residential			Non-Residential
	Twin Sharing	Single Room	Married Quarters	
Tuition Fee	2,500	2,500	2,500	2,500
Food ⁵	2,000	2,000	2,000	-
Accommodation	1,200	1,800	2,400 ¹	-

¹ The amount charged for food covers meals provided from Monday to Friday (RM60 x 40 weeks). The churches will have to make separate provision for the weekend food expenses of the student. The recommended rate is RM40 per day for 40 weekends, i.e., RM1,600 per year.

² Married Quarter is charged per quarter, not per person.

³ The amount for Medical Insurance is an estimate. It is determined by the Insurance Company from year to year.

⁴ RM120 per month x 10 months.

⁵ The amount charged for food covers meals provided from Monday to Friday but excludes inter-semester break (roughly 33 weeks only). The self-financed student must budget for one's own food expenses for weekends and holidays.

Medical Insurance ²	440	440	440	440
Internet Access, etc.	70	70	70	70
Total Fees	6,210	6,810	7,410	3,010

1.3 Other Fees

- Application Fee (for non-church sponsored): RM20
- Continuation Fee:³ 10% of annual tuition fee, i.e. RM250
- Orientation Fee: RM100
- Graduation Fee: RM100

1.4 Additional Fees and Expenses for International Students

If you are an international student coming to STM to pursue your theological education, please note that you will need to apply for a student's visa before leaving your country. The total cost of getting a student's visa varies according to the country you come from. You will need to pay RM125-300 for a student's visa. Please note that you must obtain the student's visa through us BEFORE coming to STM, otherwise, a levy of RM500.00 will be imposed by the Malaysian Immigration Department.

On the other hand, you will also need to ensure that you have sufficient funds for daily expenses during the Semester Break of STM. The fees shown above DO NOT include your daily expenses during the above-said period.

2. Theological Education by Extension (TEE) Programme

- Application and Registration Fee RM 60
- Course Fee for every 3 credit hour course RM270
- Audit Fee for every 3 credit hour course RM135
- Continuation Fee per year RM 50
- Graduation Fee RM100

3. Master of Ministry Programme

- Application and Registration Fee RM 60
- Course Fee for every 3 credit hour module RM270
- Audit Fee for every 3 credit hour course RM135
- Graduation Fee RM100
- Continuation Fee for full-time students: 10% of annual tuition fee.

4. Doctor of Ministry Programme

- Application and Orientation Fee RM 200
- Course Fees:
 - MTh degree holder (based on 4 modules) RM 3,600
 - MDiv degree holder (based on 8 modules) RM 7,200
 - MMin degree holder RM 9,000
- Research Methodology RM 900
- Thesis Supervision Fee RM 2,700
- Graduation Fee RM 300
- Continuation Fee per year (if applicable) RM 900

5. Master of Theology Programme

- Application Fee RM 150
- Course Fees (RM800 x 8 modules) RM6,400
- Thesis Supervision Fee RM3,200

¹ Married Quarter is charged per quarter, not per person.

² The amount for Medical Insurance is an estimate. It is determined by the Insurance Company from year to year.

³ "Continuation Fee" is payable upon application for any extension beyond the normal duration of studies. This fee is chargeable per year.

- Graduation Fee RM 300
 - Continuation Fee per year (if applicable) RM 500
 - Full-time students need to work out the budget for food and accommodation, book allowance, etc. A sample budget can be supplied upon request.
6. Doctor of Theology Programme (ATU) – see above
7. Part-Time & Evening Classes Fees (In-Campus)
- For audit (per credit hour) RM45
 - For credit (per credit hour) RM90

STM Community & Spiritual Formation

Training for Christian ministry involves much more than academic study. Life at STM provides an excellent inter-denominational, multinational and multi-ethnic context to relate to one another in love and unity. Students are assigned to small pastoral groups led by faculty members, where they share their personal concerns and pray for one another.

Students (as well as lecturers) participate in the spiritual and community life of the seminary including worship services, engage in field education through placements in local churches, and share in weekly pastoral groups. A three-day Annual Retreat is held at the beginning of the academic year and "Quiet Day" is scheduled at the beginning of the second semester. Furthermore, in every semester, there is a day of prayer and fasting wherein the seminary community prays for some specific concerns.

The daily worship services help to put Christ Jesus at the centre of all things as we seek to express our commitment to the Almighty God and our concerns for the world. The Anglican students and lecturers are required to attend two extra worship services on Tuesday afternoon and Thursday morning. Social and sports activities are a regular part of our community life. The sharing of physical chores in the hostel, kitchen and garden helps to develop a sense of responsibility and accountability.

Through studies and community living, we seek to help students become mature and faithful servants of God. Our aim is to provide a wholistic training that includes spiritual and character formation, academic excellence and the development of pastoral-leadership skills. We want to cultivate "scholars on fire" for the Lord.

Besides the seminary organised activities, the community is also encouraged to organise activities of interest, such as Praise Dance, Spouse Support Group and Early Morning Prayers.

Though there are limitations in the building construction and landscape, we are committed to welcome people who are physically challenged (OKU) to study in STM. Efforts are made to cater to the needs and requests. We are also committed to welcome people who are infected with HIV/AIDS. Please refer to the Appendix: "Guidelines on HIV/AIDS".



Library & Resources

The Library is an integral part of the ministry of STM, providing the necessary support facilities for theological education and research. In line with STM's mission and objectives, the Library aims to provide relevant resources, facilities and services to meet the academic and ministry needs of the STM community and researchers. We also aim to serve as a research centre on church history and mission history in Malaysia.

The Library currently holds over 50,000 titles in the various local languages, and receives about 250 journals and periodicals. We also have a reasonable collection of audio-visual materials and multimedia resources (which include electronic reference works on CD-ROM). Our archival materials include works on Malaysian Church History, personal libraries of former bishops and church leaders, and we are very keen to acquire additional materials to further expand our collection. A microfiche collection relating to mission work in Malaysia forms part of our archives, consisting of selected archives of the London Missionary Society, the International Missionary Council, the Conference of British Missionary Societies, the Christian Conference of Asia, as well as selected titles written in Chinese by early Protestant missionaries to Mainland China. The Library also subscribes to ATLAS Online, an online bibliographical search engine that provides the full-text articles of many scholarly journals.

To keep up with advances in information technology and knowledge management, the catalogue and library management system were fully automated in the year 2000 and internet research facilities are readily available.

As STM continues to develop and expand its community and academic programmes, the Library plans to similarly develop and expand by increasing its holdings and improving its facilities in order to offer up-to-date resources as well as a conducive environment for research.

Library external membership is open to STM associates, such as part-time STM students, TEE students, STM alumni, lecturers and students from other theological seminaries, clergy, full-time church workers and researchers (subject to terms and conditions). An annual membership fee plus a loan deposit will be levied. For applications and further enquiries, please contact the Library (library@stm.edu.my).



Relationships with the Wider Church

As a church-sponsored seminary, STM seeks to maintain close relationships of trust and accountability with each of our sponsoring churches, namely, The Anglican Diocese of West Malaysia, The Evangelical Lutheran Church of Malaysia, The Methodist Church of Malaysia, The Anglican Diocese of Sabah, The Gereja Presbyterian Malaysia and The Lutheran Church in Malaysia and Singapore.

At the same time, STM sees herself as part of the Church at large and wishes also to maintain cordial relationships with the wider Christian community locally and internationally. STM sees herself in a servant relationship to the Church. We believe that STM has a vitally important role to play on behalf of the Churches in this country, but we do not believe that we have all the answers to the needs and challenges of the Christian community in our time. While the seminary has the responsibility to maintain the standards necessary to a proper education for ministry, we seek to serve God and the Church faithfully.

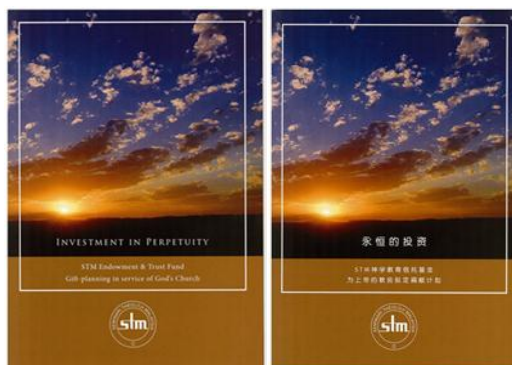
1. *Financial Support*

STM is supported only in part by the fees charged for students. The six sponsoring churches pay an annual subscription each, and contribute by way of donations on which we are dependent year by year. While some of our sponsoring denominations support by seconding lecturers teaching in STM, we still need to raise financial support for other lecturers and staff serving in the seminary.

We seek to be good stewards of the funds that are placed in our care by donors who often at some considerable sacrifices recognise the importance of our mission for the future of the Christian Church in Malaysia. We would not wish to presume on people's generosity but seek to earn the trust that we believe is essential to our task. As God has richly blessed us for the past many years, it is our commitment that we will continue to strive to be faithful stewards.

2. "STM Friends & Partners" (STM 摯友和伙伴)

We recognise that the effectiveness of our work depends very much on a ministry of prayer and we are grateful to those who are particularly committed to us in this way. If you personally or your church would be interested in maintaining a closer partnership with what we are doing, please write to the Principal, Rev Dr Ezra Kok to express your interest in supporting our work as "STM Friends" (individuals) and "STM Partners" (churches and other organisations).



3. *STM Endowment-Trust Fund* (STM神学教育信托基金)

This Fund was officially launched on 6 August 2009 during the 30th Anniversary Celebration at Seremban. Under the leadership of Pastor Richard Wong King Iion, the Chairperson of Endowment-Trust Fund Committee, we managed to share the vision and some have responded to our invitation.

We hope to recruit more donors to make endowment plans so as to generate revenue for greater development: Support for the faculty; Acquisition of library's research

resources, Scholarships for qualified postgraduate students and needy students, etc. Your kind assistance in furnishing us with the names of potential donors is very much appreciated.

4. *Involvement with Local Congregations*

Students spend quite a bit of their training in local churches on Field Education and weekend placements. This is an important way by which church members and pastors share in the task of theological education. We hope that it is also a way in which our students contribute in return to the churches that are sponsoring them.

Faculty members are also regularly requested to undertake preaching, teaching and speaking engagements in Sunday services, camps and seminars. Churches can also invite faculty members to share on "STM Sunday".

5. *Relationships with Other Theological Seminaries*

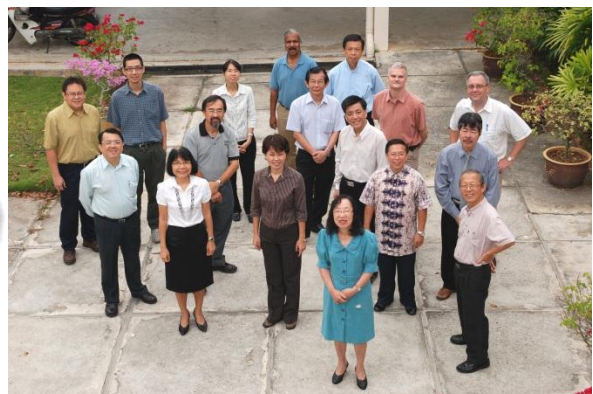
We see ourselves as part of the overall commitment to theological education and mission shown by the Christian community in Malaysia. We do not regard ourselves in competition - except on the sports field when students exchange visits, but rather in co-operation and fellowship. The major seminaries in this country have formed a network called "Malaysian Association of Theological Schools" (MATS). We wish to further develop inter-library loan facilities with other seminaries and we value the opportunity to exchange lecturers from time to time.

6. *The Institute of World Religions (IWR)*

The establishment of IWR under the auspices of STM is to provide a means for Christians to better understand the people of other religions in the local and global context. IWR is not a consultative nor an advisory body but an academic centre in the interest of intercultural and interreligious understanding. The primary role of IWR is to maintain standards of its academic rigour in research and study. In order to equip ourselves to engage the society in which it subsists, IWR engages in the collection of data, rigorous analyses and debate its own findings, and ergo the IWR is a centre of learning. Through IWR, seminars and public talks are organised for the Christian community and the public. The current Director is Rev Dr Joseph Komar (joe8162915@yahoo.com).

7. "Scholars on the Road" (讲师与您同思同行)

This is a new initiative by STM to promote solid scholarship and sound learning for laypeople in our churches by making available our faculty to be facilitators and speakers at the local and district levels. The STM faculty are available to go on invitation to the churches which required specialised help and training. To make full use of this channel, a local church can plan to organise the training on a district or town level and invite surrounding churches to participate. Invitations can be sent directly to the faculty members concerned and to work out the further details. STM is making a list of their faculty and their expertise which can be offered to the churches. The overall contact person for this initiative is Rev Dr Anthony Loke (aloke6@gmail.com).



To STM Friends & Partners

Dear STM Friends and Partners,

We would sincerely like to invite you to join us in the task we are undertaking for our Lord Jesus Christ by becoming "Friends and Partners of STM". **Friends** are individuals while **Partners** are churches and organisations, who will support us in our God-given mission of equipping God's people for ministry and mission, and providing premier theological training. You can support us in the following ways:

1. Pray for us unceasingly. We will send you our newsletter *Berita STM* regularly to keep you informed of our ministry. Or, we can send you the news through electronic means.
2. Prayerfully send us suitable men and women of God for full-time ministerial training in response to God's calling. We look forward to welcoming individuals who have a genuine desire to be equipped for ministry.
3. Theological training is expensive. If God moves you to contribute financially to our needs, please use the form ("STM Friends & Partners' Reply Slip") attached.
4. You may consider setting aside a sum of money for the STM Endowment-Trust Fund to meet the specific needs of STM.
5. Becoming a "Friend of STM", you pledge to give a minimum amount of RM300 annually to support the ministry of STM.
6. Becoming a "Partner of STM", you as a church or organisation pledge to give a minimum fixed amount of RM1000, RM5000, RM10,000 or more annually to support the ministry of STM.

We are humbled by the enormity of the task ahead, and look to the Lord for His provision as we step forward in this ministry by faith and confidence in Him. We also invite you to partner with us in this worthwhile ministry in financial support and prayer.

Yours truly,
Rev Dr Ezra Kok
The Principal



STM Friends & Partners' Reply Slip

To:

The Principal
Seminari Theoloji Malaysia
Taman South East
70100 Seremban
Negeri Sembilan
Malaysia.

Dear Sir,

I wish to receive *Berita STM* regularly: hard copy; e-copy

I would like to donate to:

General Fund	RM _____
Library Fund	RM _____
Student Scholarship Fund	RM _____
Indigenous Student Scholarship Fund	RM _____
Building Development Fund	RM _____
Faculty Development Fund	RM _____
Endowment Fund	RM _____

* Enclosed please find a cheque/MO/Bank Draft _____ for the sum of RM_____. (Please make the cheque payable to "Seminari Theoloji Malaysia").

* You can also transfer the amount directly to our Public Bank Account (3064759900) and send us the bank-slip by fax or email.

- I would like to become a "Friend of STM".
- We would like to become a "Partner of STM".
- I/We would like to endow Chair for Professorship/Lectureship
- I/We would like to set up Foundation for Faculty Development
- I/We would like to set up Foundation for Student Scholarships
- I/We would like to contribute towards Library Special Collection
- I/We would like to contribute towards the campus facilities
- I/We are interested to know about the campus facilities. Please send me more information.
- I would like to know more about full-time theological studies in STM
- I would like to know more about part-time theological studies in STM

From:

Name (English): _____ Chinese: _____
(Tan Sri/Puan Sri/Datuk/Datin/Bishop/Rev/Dr/Mr/Mrs/Madam/Miss)

Address: _____

Tel: (O) _____ Tel: (H) _____

Fax: _____ HP: _____

E-mail: _____

Church: _____

Denomination: _____

Preferred Language: English Mandarin

Date: _____

Appendix: Faculty Publications

- Loke, Anthony Y.F. *Passing the Baton: Meditations from Paul's Second Letter to Timothy*. STM Series. Singapore: Genesis, Armour; Seremban: STM, 2011.
- Tan, Jin Huat. *Brookes, the British, and Christianity Christian Missions and the State in Sarawak, 1841-1963*. STM Series. Singapore: Genesis, Armour; Seremban: STM, 2011.
- Tan, Jin Huat. *Planting an Indigenous Church: The Case of the Borne Evangelical Mission*. Regnum Studies in Mission. Carlisle, England: Regnum Books International, 2011.
- Lau, Peter. *Identity and Ethics in the Book of Ruth*. Berlin/New York: Walter de Gruyter, 2011.
- Barker, Paul A. *Deuteronomy: The God who Keeps Promises*. Melbourne: Acorn Press, 1998; reprint, Kuala Lumpur: Pustake SUFES, 2011) Chinese Translation: 保罗·巴刻: 《申命记: 持守应许的神》。台北: 天恩, 2009。
- Loke, Anthony Y.F. *Ecclesiastes Made Simple*. The Old Testament Made Simple. Kuala Lumpur: Pustake SUFES, 2010.
- Kok, Ezra Hon-seng. 郭汉成: 《天上蓝图、人间版图: 以弗所书诠释》。30週年紀念叢書。吉隆坡: 文桥, 2010。 (*Heavenly Vision for Witness on Earth: A Commentary on Ephesians*. Kuala Lumpur: The Bridge Communications, 2010).
- Lim, Kar Yong. *The Sufferings of Christ Are Abundant in Us: A Narrative Dynamics Investigation of Paul's Sufferings in 2 Corinthians*. Library of New Testament Studies Series. London: T & T Clark, 2009.
- Solomon Rajah. *Christian Guide To Indian Cultural Practices In Malaysia and Singapore*. Kuala Lumpur: Council of Churches of Malaysia, 2008.
- Albert Sundararaj Walters. *Knowing Our Neighbour: A Study of Islam for Christians in Malaysia*. Kuala Lumpur: Council of Churches of Malaysia, 2007.
- Loke, Anthony Y.F. *Memahami Kitab Amsal*. Sabah: Seminari Teologi Sabah, 2007. BM Translation of "Proverbs Made Simple"
- Solomon Rajah. *Violence and Peace: Some Asian Religious Thoughts and A Christian Perspective*. Kuala Lumpur: Council of Churches of Malaysia, 2007.
- Loke, Anthony Y.F. *Job Made Simple*. The Old Testament Made Simple. Kuala Lumpur: Pustake SUFES, 2006.
- Solomon Rajah. *Symbols & The Church: The Relevance in the Malaysian Context*. Kuala Lumpur: Council of Churches of Malaysia, 2005.
- Barker, Paul A. *The Triumph of Grace: Faithful Yahweh and Faithless Israel in Deuteronomy*. Carlisle: Paternoster, 2004.
- Kok, Ezra Hon-seng. 郭汉成: 《加拉太书导论》。圣经导论丛书。香港: 基道, 2003。 (*A Study Guide on The Epistle to the Galatians*. Hong Kong: Logos, 2003)
- Loke, Anthony Y.F. *Proverbs Made Simple*. The Old Testament Made Simple. Kuala Lumpur: Pustake SUFES, 2003.

Albert Sundararaj Walters. *We Believe in One God? Reflections on the Trinity in the Malaysian Context*. Delhi: ISPCK, 2002.

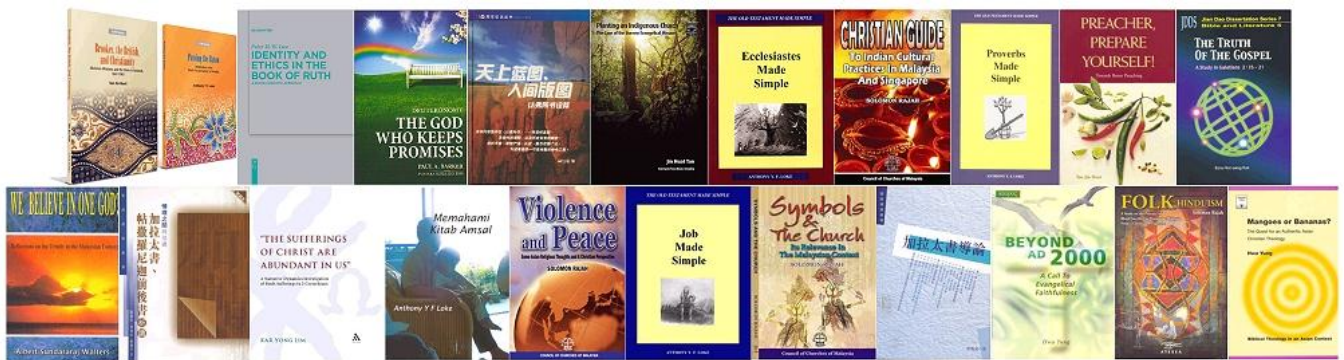
Solomon Rajah. *Folk Hinduism: A Study on the Practice of Blood Sacrifice in Peninsular Malaysia from a Christian Perspective*. Manila: ATESEA, 2000.

Tan, Jin Huat. *Preacher, Prepare Yourself! A manual for better preaching preparation*. Kuala Lumpur: Good News Resources, 2000.

Kok, Ezra Hon-Seng. *The Truth of the Gospel: A Study in Galatians 2:15-21*. Jian Dao Dissertation Series 7. Hong Kong: Alliance Bible Seminary, 2000.

Hwa, Yung. *Beyond AD 2000: A Call to Evangelical Faithfulness*. Kuala Lumpur: Kairos Research Center, 1999.

Hwa, Yung. *Mangoes or Bananas? The quest for an authentic Asian Christian theology*. Regnum Studies in Mission. Carlisle, England: Regnum Books International, 1997; second reprint, 2004.





Appendix: STM Alumni Association

1. Inception

The Alumni Association was established in 1989 with the aim of serving the Seminary and the Alumni. Rev Wilfred John was the first President and the Advisor then was Miss Ho Gaik Kim.

2. Purpose

The STM Alumni Association plays an important role in providing an informational network for the Alumni.

3. Objectives

- To strengthen fellowship between Alumni and to encourage each other in ministry.
- To promote fellowship between Alumni, current students and faculty of STM.
- To support and promote the work and ministry of STM.

4. Stay Connected

We are eager to stay connected. It is our hope that every student graduated from STM will make the effort to continue to contribute to their alma mater by becoming active members of the Alumni Association.

5. Membership

a. Life Membership

- The subscription is RM100.00 per person.
- Benefits:
 - ✓ Life-long learning and special discount for studies: 10% for Advanced Ministerial Study Programme courses (MMin and DMin).
 - ✓ Special 50% discount for dormitory and guest room for personal retreat or family retreat during non-peak season.
 - ✓ Distribution of free books and/or CD of seminars/talks held at STM.
 - ✓ Special discount for Eerdmans & ELT books (selection of recommended ones).
 - ✓ Access to ATLA's online journals.

b. Ordinary Membership

- The subscription is RM10.00 per Year.
- Benefit:
 - ✓ Distribution of free books and/or CD of seminars/talks held at STM.

6. Events

In making connection with fellow STM alumni, the Alumni Association organizes:

- a. Alumni Homecoming Day (usually in early September)
- b. Alumni Retreat (once in every two years)

7. Registration Form

- The Form is available from the STM website, STM Office or the Alumni Association. Kindly send your registration form with payment to:

STM Alumni Association
STM
Taman South East,
70100 Seremban.

All cheques should be made payable to "Seminari Theoloji Malaysia".

8. Contact

- For further enquiries, please contact the Association Chairperson Ms Vernie Woo or the Association Advisor, Canon Deaconess Margaret Chen at msychen@yahoo.co.uk.

Appendix: STM Guidelines on HIV/AIDS

Introduction: In line with recent approval by the STM Council on future admission of people known to have HIV/AIDS as student of STM community, the following guidelines should be strictly adhered to by all members of the STM community. Circular dated: 18 October, 2006.

1. There should be no discrimination of any kind by anybody toward any person who may suffer from HIV/AIDS.
2. All are required to assist in helping any such person to assimilate himself/herself into the STM community.
3. A person who suffers from HIV/AIDS is required to disclose it in his or her application to study in STM. Upon acceptance, the Dean of Students shall inform the STM community.
4. Should any person from the STM community be found to have HIV/AIDS, he or she is required to inform the Dean of Students immediately.
5. Members of the STM community who refuse to work with person who has HIV/AIDS will be counseled and educated and if necessary, appropriate action may be taken.
6. All members of the STM community should habitually practice universal precaution at all times such as using gloves when coming into contact with blood.
7. To minimize infecting HIV/AIDS person, avoid sneezing or any other behavior which may result in spreading virus or germs to the person who is much more vulnerable to infection than other people.
8. Remember, HIV virus does not spread by hand-shaking, sharing of cutlery, food or drink, hugging, insect bite etc. The virus must get into the blood stream of a person before it becomes dangerous.
9. Please read up about HIV/AIDS so that you would not be ignorant or have unfounded misconceptions about the disease.